



JINDEE

# BUILDING IN JINDEE

Discover the possibilities

**JINDEE  
BONUS**

UP TO \$25K  
ON SELECTED  
HOMESITES

Terms & conditions apply

Artist impression\*

 **3** |  **2** |  **2** | FRONTAGE **14m**

## THE BAYLINER

House & Land from \$790,425\*\*

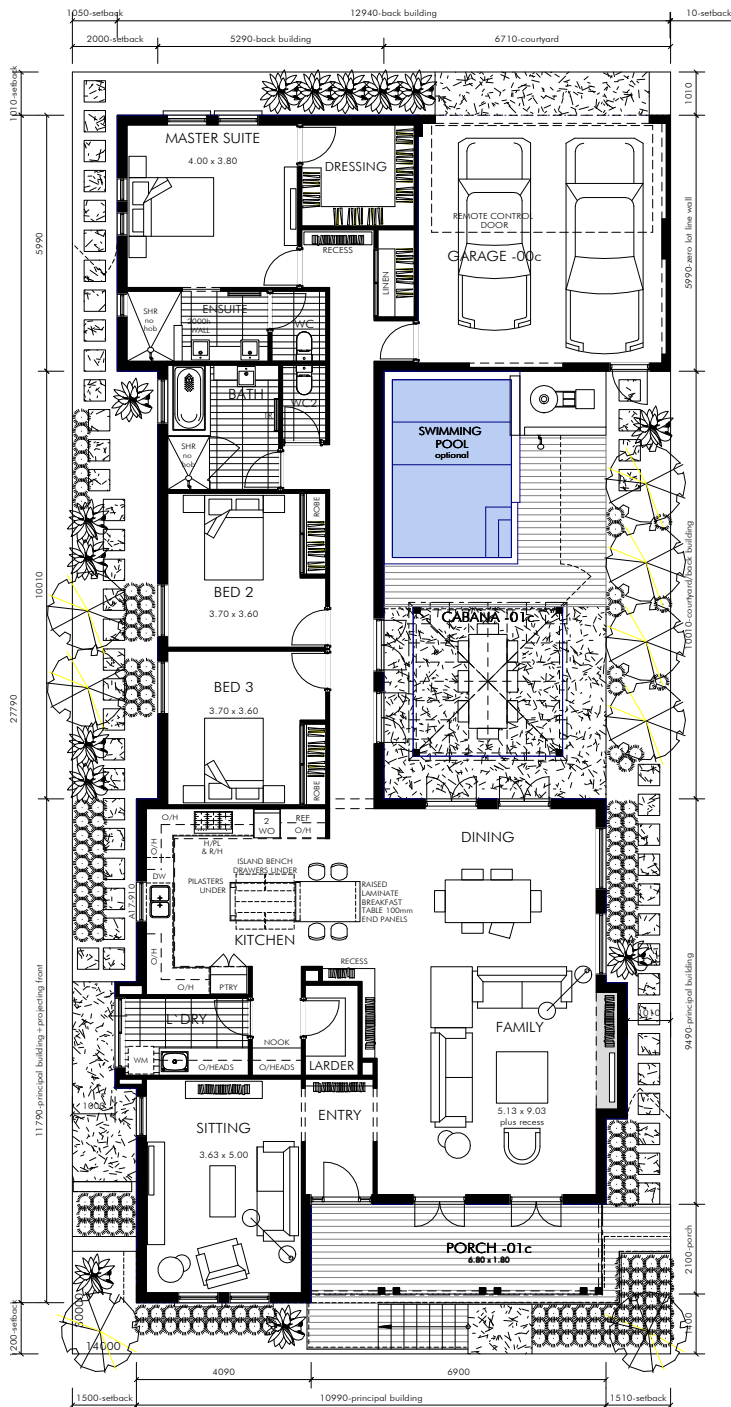
House price from \$448,425\*\*

**BH**  
**BROADWAY**  
HOMES

# THE BAYLINER

House & Land from \$790,425\*\*

House price from \$448,425\*\*



## FEATURES

- Gourmet kitchen with larder
- Central alfresco living with Cabana
- Master suite with ensuite and separate dressing

## What does building at Jindee mean for you?

- Architectural standards that evoke timeless design.
- Shady, safer streets creating a walkable neighbourhood.
- Three times more street trees than usual.
- A beautiful and functional urban design.
- Multi-generational, Jindee will be a place for everyone.
- True product mix - from 165m<sup>2</sup> to over 2000m<sup>2</sup>.
- Perfectly located for work and play - less than 1km from the coast and less than 1km to Butler train station.
- True connection to the ocean no matter where you are within Jindee, and natural undulating land levels through the dunes and valley of the land.
- Diversity in use - commercial, retail and residential will all feature - providing total convenience and liveability.

## Want more information?

Contact: Nicola from Jindee on 0437 602 109

Visit: Jindee Sales Office - Corner Marmion & Oceania Avenues, Jindalee (JINDEE)

1300JINDEE [jindee.com.au](http://jindee.com.au)



JINDEE