



JINDEE

BUILDING IN JINDEE

Discover the possibilities



Artist impression*

3 | 2 | 2 | FRONTAGE 10m

THE SWANBOURNE

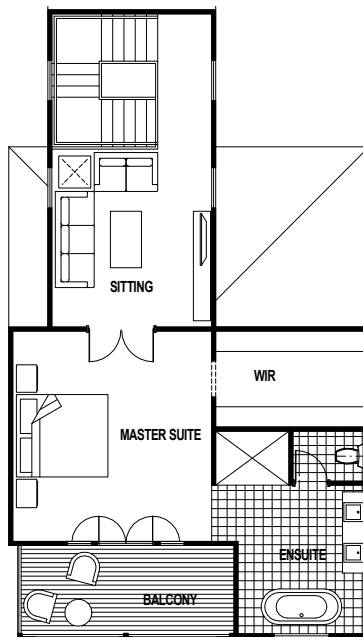
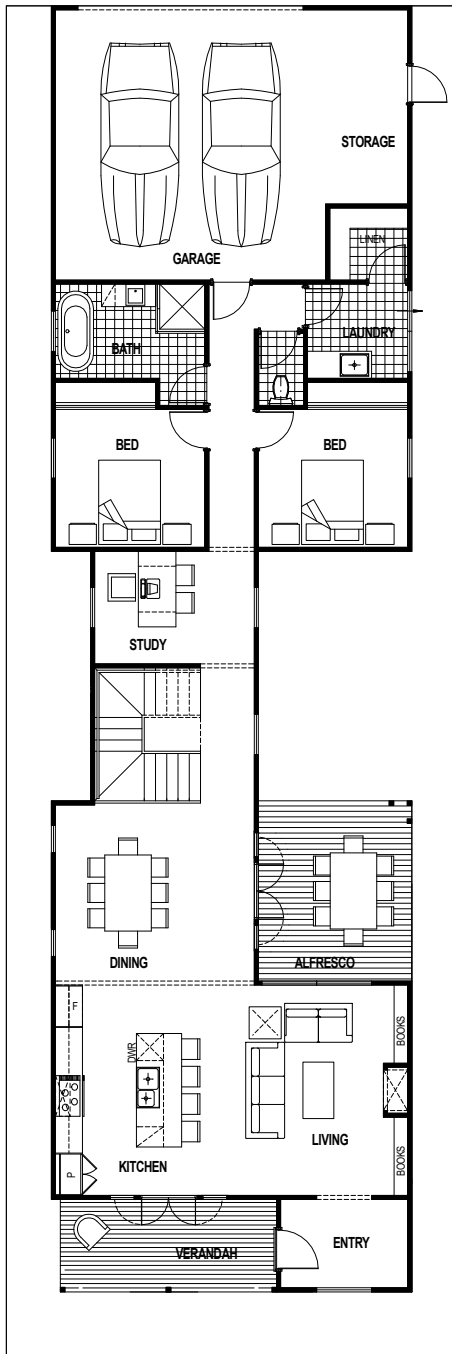
House & Land from \$729,000**

House price from \$460,000**

SCHLAGER

RESIDENTIAL & DEVELOPMENT

QUALITY THROUGH PRECISION



FEATURES

- Feature timber finishes to Balcony and Verandah
- Resort-styled Ensuite with freestanding bath
- Parents retreat on Second floor

What does building at Jindee mean for you?

- Architectural standards that evoke timeless design.
- Shady, safer streets creating a walkable neighbourhood.
- Three times more street trees than usual.
- A beautiful and functional urban design.
- Multi-generational, Jindee will be a place for everyone.
- True product mix - from 165m² to over 2000m².
- Perfectly located for work and play - less than 1km from the coast and less than 1km to Butler train station.
- True connection to the ocean no matter where you are within Jindee, and natural undulating land levels through the dunes and valley of the land.
- Diversity in use - commercial, retail and residential will all feature - providing total convenience and liveability.

Want more information?

Contact: Nicola from Jindee on 0437 602 109
Visit: our pop up sales office - corner of Marmion Avenue and Kingsbridge Boulevard in Butler

1300JINDEE jindee.com.au



JINDEE

*Illustrations and artists impressions/perspective of buildings, interiors and views in this flyer are indicative only and subject to change without notice.

**Prices are correct at time of printing and are subject to change (including increase) without notice. Above package includes the land price and base home price only. Site works are not included and can be provided separately after a formal survey of the lot by the purchasers' chosen builder - all costs related to the survey of the lot are the responsibility of the purchasers. Produced December 2017. This flyer contains information only and does not constitute an offer capable of acceptance by a prospective purchaser.