



JINDEE

# BUILDING IN JINDEE

Discover the possibilities



Artist Impression

 **4** |  **2** |  **2** | FRONTAGE **14m**

PARAGON

 HomeGroupWA  
DESIGNED FOR WA LIVING

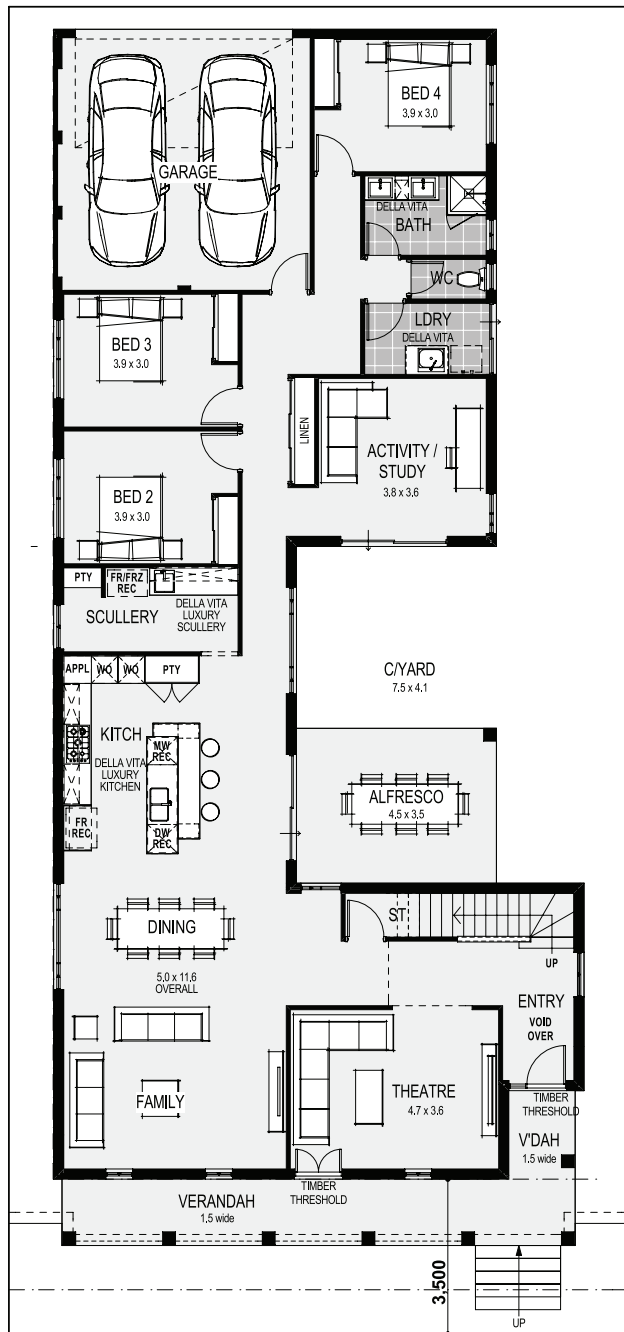
# PARAGON

## FEATURES

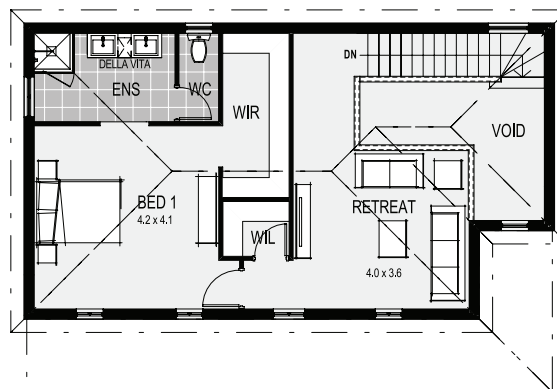
- Home Group WA luxury kitchen specification
- Conventional construction techniques
- Specifically designed for Jindee Estate

## What does building at Jindee mean for you?

- Architectural standards that evoke timeless design.
- Shady, safer streets creating a walkable neighbourhood.
- Three times more street trees than usual.
- A beautiful and functional urban design.
- Multi-generational, Jindee will be a place for everyone.
- True product mix - from 165m<sup>2</sup> to over 2000m<sup>2</sup>.
- Perfectly located for work and play - less than 1km from the coast and less than 1km to Butler train station.
- True connection to the ocean no matter where you are within Jindee, and natural undulating land levels through the dunes and valley of the land.
- Diversity in use - commercial, retail and residential will all feature - providing total convenience and liveability.



GROUND FLOOR  
1:100



UPPER FLOOR  
1:100

## Want more information?

**Contact:** Nicola from Jindee on 0437 602 109

**Visit:** Sales Office - corner of Marmion and Oceania Avenue, Jindalee

1300JINDEE [jindee.com.au](http://jindee.com.au)