



JINDEE

# BUILDING IN JINDEE

Discover the possibilities



Artist Impression\*

4 | 3 | 2 | FRONTAGE 12m

## SHORE HOUSE 2

House & Land from \$808,000\*\*

House price from \$503,000\*\*

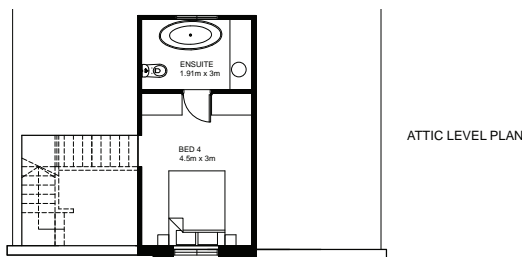
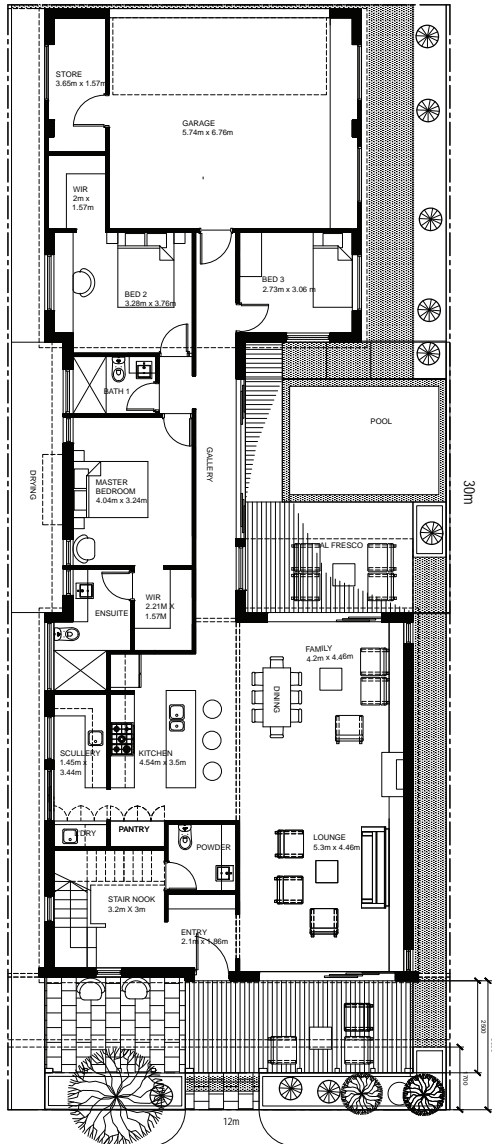
MHPA

architecture | interior | urban

# SHORE HOUSE 2

House & Land from \$808,000\*\*

House price from \$503,000\*\*



## FEATURES

- Architect designed home with personalised architect client consultation with each home
- Quality finishes, quality built by bespoke builder the traditional way
- Full turn key
- High ceilings and raked ceilings to Family/Lounge
- Pool included (optional)
- Gas Fireplace included

## What does building at Jindee mean for you?

- Architectural standards that evoke timeless design.
- Shady, safer streets creating a walkable neighbourhood.
- Three times more street trees than usual.
- A beautiful and functional urban design.
- Multi-generational, Jindee will be a place for everyone.
- True product mix - from 165m<sup>2</sup> to over 2000m<sup>2</sup>.
- Perfectly located for work and play - less than 1km from the coast and less than 1km to Butler train station.
- True connection to the ocean no matter where you are within Jindee, and natural undulating land levels through the dunes and valley of the land.
- Diversity in use - commercial, retail and residential will all feature - providing total convenience and liveability.

## Want more information?

Contact: Nicola from Jindee on 0437 602 109

Visit: Sales Office - corner of Marmion and Oceania Avenue, Jindalee

1300JINDEE [jindee.com.au](http://jindee.com.au)