



JINDEE

BUILDING IN JINDEE

Discover the possibilities



Artist impression

4 | 2 | 2 | FRONTAGE 10m

THE BEACH HOUSE

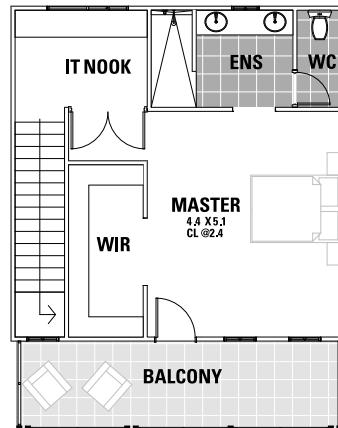
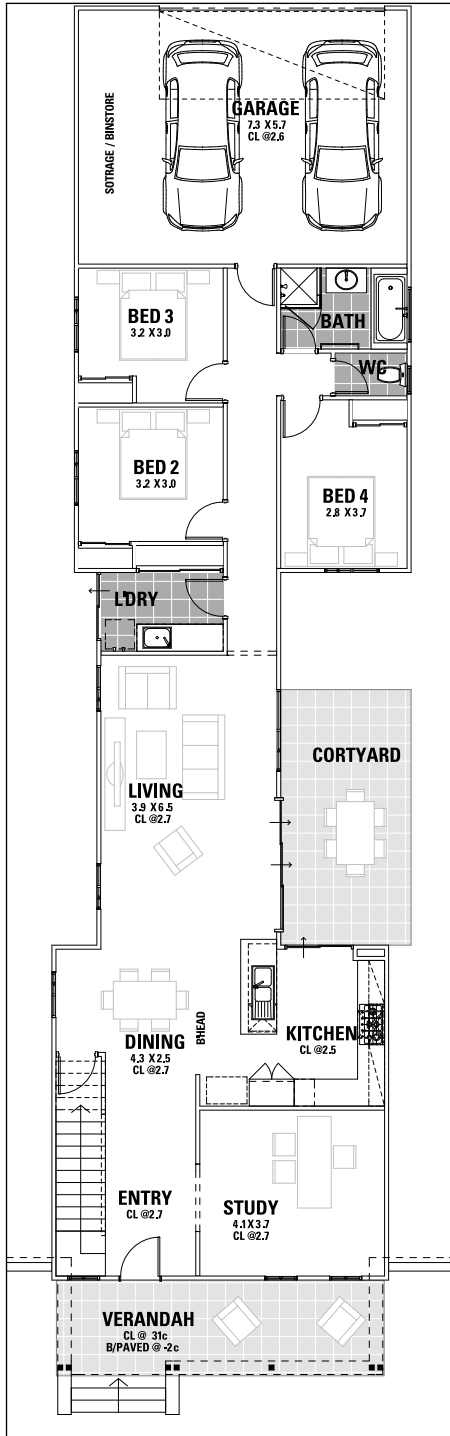
House & Land from \$604,000**

House price from \$325,000**



THE BEACH HOUSE

House & Land from \$604,000**
House price from \$325,000**



FEATURES

- Private parents retreat
- Spacious layout
- Large chef's kitchen

What does building at Jindee mean for you?

- Architectural standards that evoke timeless design.
- Shady, safer streets creating a walkable neighbourhood.
- Three times more street trees than usual.
- A beautiful and functional urban design.
- Multi-generational, Jindee will be a place for everyone.
- True product mix - from 165m² to over 2000m².
- Perfectly located for work and play - less than 1km from the coast and less than 1km to Butler train station.
- True connection to the ocean no matter where you are within Jindee, and natural undulating land levels through the dunes and valley of the land.
- Diversity in use - commercial, retail and residential will all feature - providing total convenience and liveability.

Want more information?

Contact: Nicola from Jindee on 0437 602 109
Visit: our pop up sales office - corner of Marmion Avenue and Kingsbridge Boulevard in Butler

1300JINDEE jindee.com.au