



JINDEE

# BUILDING IN JINDEE

Discover the possibilities



Artist impression\*

4 | 2 | 2 | FRONTAGE 14m

## THE COLONIAL

House & Land from \$644,000\*\*

House price from \$295,000\*\*



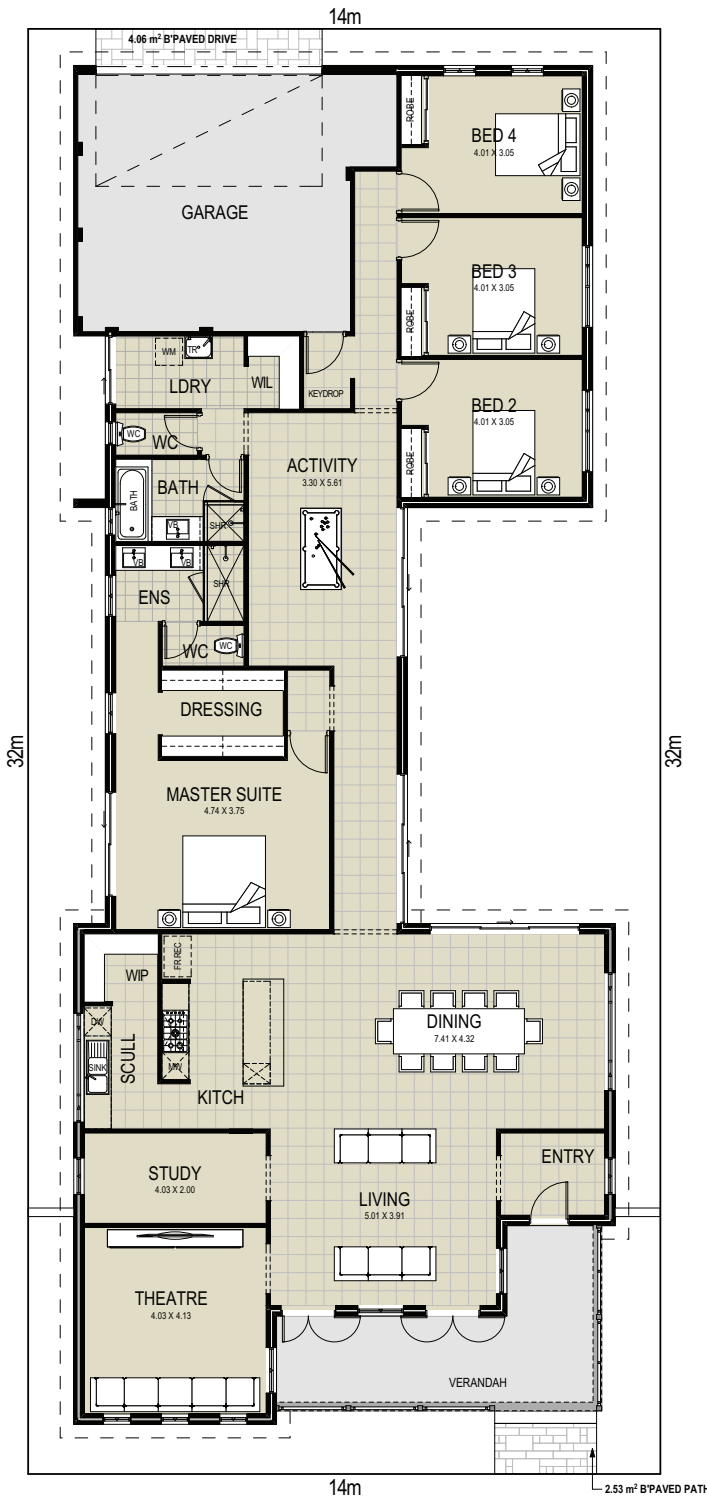
newchoice  
homes

PROUDLY BACKED BY SPADACCINI HOMES

# THE COLONIAL

House & Land from \$644,000\*\*

House price from \$295,000\*\*



## FEATURES

- Beautiful Jindee elevation with feature projecting front, wrap around bullnose verandah and french doors.
- Large 4 bedroom 2 bathroom family home, theatre, study and kids activity.
- Stunning open plan floor plan boasting massive chef's kitchen with scullery. Dining and living connecting to the verandah and courtyard living spaces.
- Full turn key package including ducted reverse cycle air conditioning, floor coverings, blinds, stone bench tops and LED lighting package.

## What does building at Jindee mean for you?

- Architectural standards that evoke timeless design.
- Shady, safer streets creating a walkable neighbourhood.
- Three times more street trees than usual.
- Perfectly located for work and play - less than 1km from the coast and less than 1km to Butler train station.
- True connection to the ocean no matter where you are within Jindee, and natural undulating land levels through the dunes and valley of the land.

## Want more information?

Contact: Nicola from Jindee on 0437 602 109

Visit: Jindee Sales Office - Corner Marmion & Oceania Avenues, Jindalee (JINDEE)

1300JINDEE [jindee.com.au](http://jindee.com.au)



JINDEE