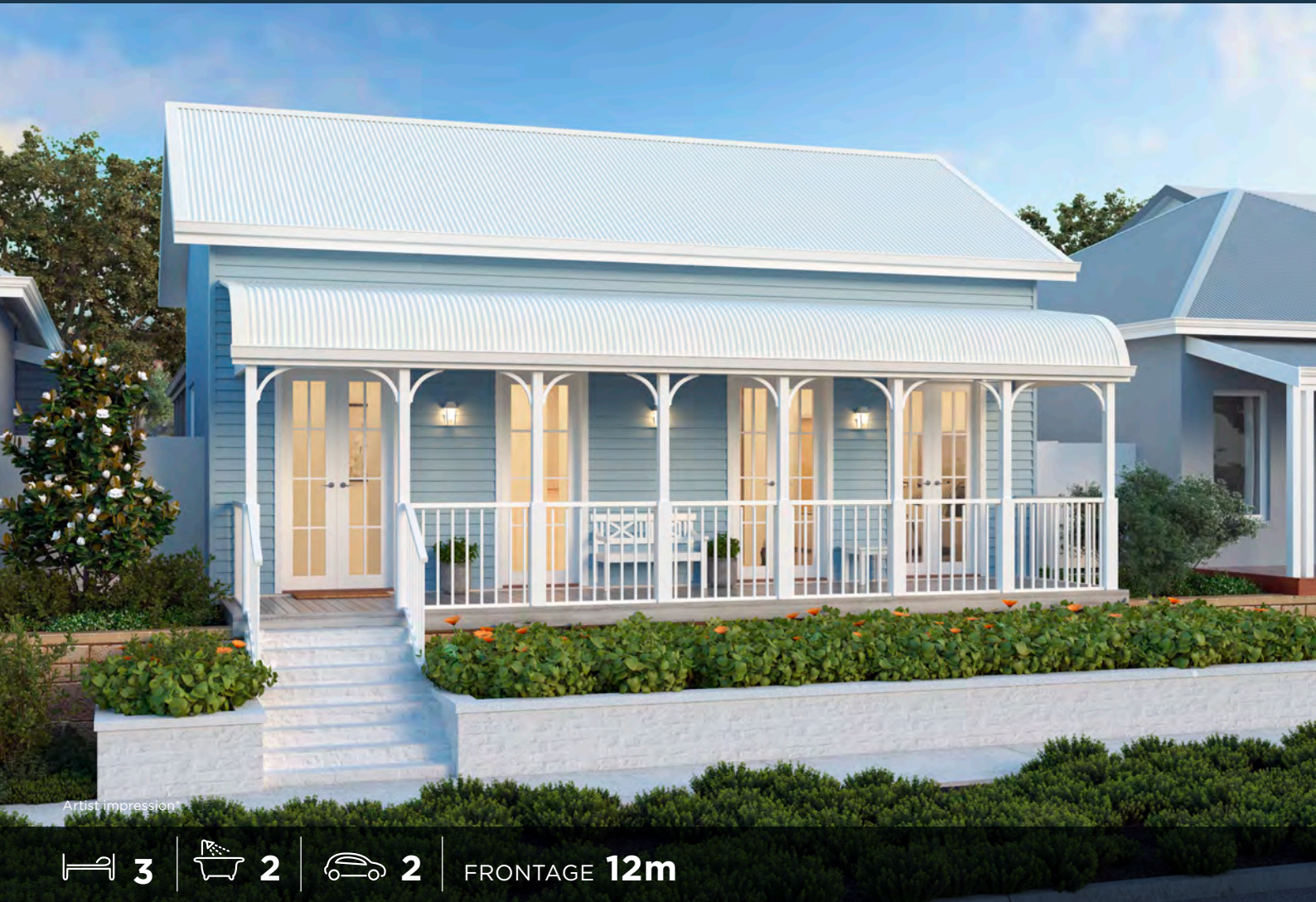




JINDEE

BUILDING IN JINDEE

Discover the possibilities



Artist Impression

3 | 2 | 2 | FRONTAGE 12m

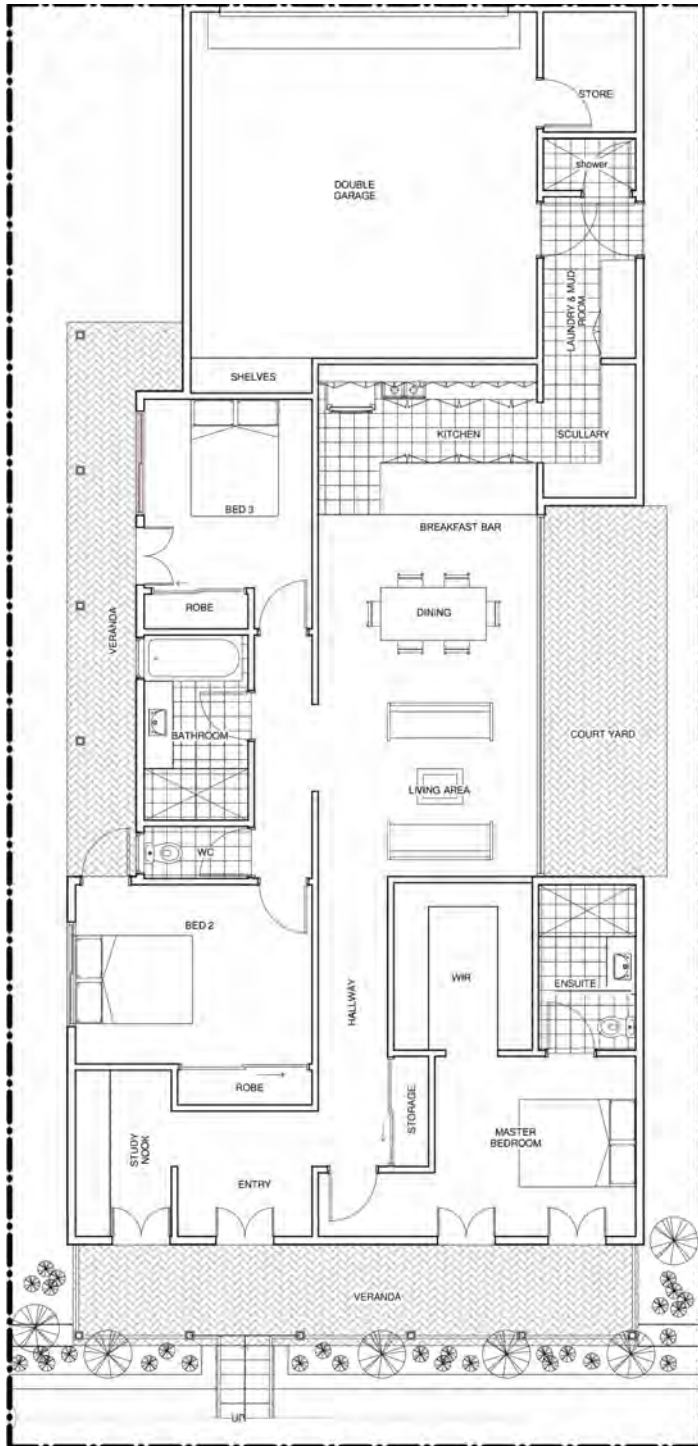
THE CEDAR

House & Land from \$581,900**

House price from \$286,900**



PRIDE HOMES
& DEVELOPMENTS



THE CEDAR

House & Land from \$581,900**

House price from \$286,900**

FEATURES

- Built with the craftsmanship of Pride Homes, creating bespoke, timber frame, quality designed homes.
- Large, open plan living with chefs kitchen including 900mm stainless steel appliances, premium Evo-stone bench tops and overhead cabinetry
- 2.7m high ceilings throughout
- Complete with the Pride Luxury Inclusions Package including colonial architraves, skirting and window boards as standard.
- Includes fully personalised design consultation with every home

What does building at Jindee mean for you?

- Architectural standards that evoke timeless design.
- Shady, safer streets creating a walkable neighbourhood.
- Three times more street trees than usual.
- A beautiful and functional urban design.
- Multi-generational, Jindee will be a place for everyone.
- Perfectly located for work and play – less than 1km from the coast and less than 1km to Butler train station.
- True connection to the ocean no matter where you are within Jindee, and natural undulating land levels through the dunes and valley of the land.

Want more information?

Contact: Nicola from Jindee on 0437 602 109

Visit: Jindee Sales Office - Corner Marmion & Oceania Avenues, Jindalee (JINDEE)

1300JINDEE jindee.com.au



JINDEE