



Jindee Innovation Project, Jindalee, WA (EPBC 2012/6631)

Estates Development Company

2025 Annual Compliance Report (Rev 0)

JBS&G 68056

11 April 2025





We acknowledge the Traditional Custodians of Country throughout Australia and their connections to land, sea and community.


We pay respect to Elders past and present and in the spirit of reconciliation, we commit to working together for our shared future.

Caring for Country The Journey of JBS&G
Artist: Patrick Caruso, Eastern Arrernte

Declaration of accuracy

In making this declaration, I am aware that sections 490 and 491 of the *Environment Protection and Biodiversity Conservation Act 1999* (Cth) (EPBC Act) make it an offence in certain circumstances to knowingly provide false or misleading information or documents. The offence is punishable on conviction by imprisonment or a fine, or both. I declare that all the information and documentation supporting this compliance report is true and correct in every particular. I am authorised to bind the approval holder to this declaration and that I have no knowledge of that authorisation being revoked at the time of making this declaration.

Signed



Full name (please print)

_____ James Tharpe _____

Position (please print)

_____ Project Director _____

Organisation (please print including ABN/ACN if applicable)

_____ Estates Development Company Pty Ltd (ABN 77 008 995 668) _____

Date

_____ 02 _____ / _____ 05 _____ / _____ 2025 _____

Table of Contents

Abbreviations	3
1. Introduction	4
1.1 Purpose of this Report	4
1.2 Project Background	4
1.1 Environmental approval to implement project	4
2. Current Status	6
3. Audit Methodology	6
3.1 Purpose and scope	6
3.2 Audit period	6
3.3 Methodology.....	6
3.4 Audit terminology	7
4. Audit Results	7
4.1 Assessment of Compliance	7
4.1.1 Compliance with EPBC conditions	7
4.1.2 Conformance with the Conservation Management Plan	8
4.1.3 Conformance with the Clearing and Revegetation Management Plan.....	8
4.2 Potential Non-compliance	8
5. New Environmental Risks	8
6. References	15
7. Limitations	15

List of Tables

Table 3.1: Persons consulted.....	7
Table 3.2: Action implementation status (DCCEEW 2023).....	7
Table 4.1: EPBC 2012/6631 Audit table.....	9
Table B.1: Conservation Management Plan (Revision 8) Audit Table	17
Table C.1: Clearing and Revegetation Management Plan (Revision 7) reporting Table	26
Table D.1: Evidence Register	31

List of Figures

Figure 1: Jindee Concept Development Plan - clearing in the reporting period.	5
------------------------------------------------------------------------------------	---

Appendices

Appendix A	EPBC Approval 2012/6631	16
Appendix B	Conservation Management Plan Compliance Assessment.....	17
Appendix C	Clearing and Revegetation Management Plan Compliance Assessment.....	26
Appendix D	Evidence Register	31

Abbreviations

Term	Definition
ACR	Annual Compliance Report
EPBC Act	Environment Protection and Biodiversity Conservation Act 1999
CoW	City of Wanneroo
WAPC	Western Australian Planning Commission
EPA	Environmental Protection Authority
DCCEEW	Department of Climate Change, Energy, the Environment and Water
DotE	Department of the Environment
CMP	Conservation Management Plan
CRMP	Clearing and Revegetation Management Plan

1. Introduction

1.1 Purpose of this Report

This Annual Compliance Report (ACR) addresses the status of implementation of the 'Jindee Innovation Project' and level of compliance with the conditions in the *Environment Protection and Biodiversity Conservation Act 1999* (EPBC Act) approval 2012/6631 (EPBC 2012/6631; and Appendix A) and the related environmental management plans.

This ACR (2024-25) summarises the results of a compliance assessment undertaken in order to assess the compliance status of approval conditions and condition management plans for the audit period 4 February 2024 to 3 February 2025.

1.2 Project Background

Westminster Estates Pty Ltd entered into an agreement in 2007 with the Western Australian Planning Commission (WAPC) and the City of Wanneroo to undertake an innovative urban development, known as the Jindee Innovation Project. The Jindee Innovation Project is located approximately 37 km north of Perth and 14 km north-west of the Joondalup City Centre, Western Australia, in the City of Wanneroo (CoW).

The development is on land owned by Westminster within Lot 9008 Marmion Avenue and has approximately 800 m frontage to the Indian Ocean. The developable area covers an area of 100 ha. The project was developed in consultation with the WAPC and the Environmental Protection Authority (EPA) with an objective to maximise the biodiversity protected on site.

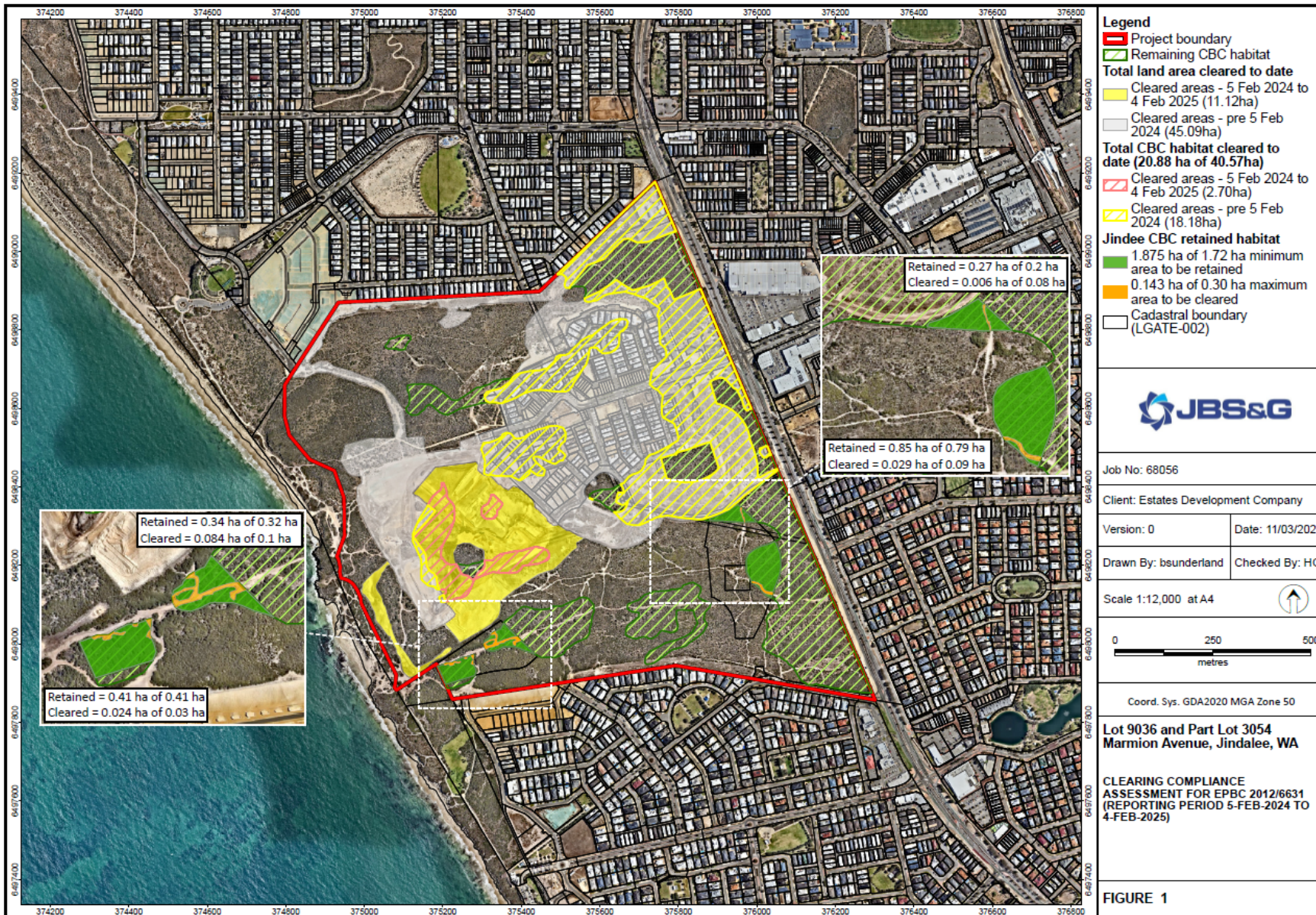
1.1 Environmental approval to implement project

The Jindee Innovation Project is owned by Westminster, managed by Estates Development Company (Estates Development Company), and the proposed action was to clear native vegetation on Lot 9036 and Part Lot 3054 Marmion Avenue (now Lot 9008), Jindalee, for development of a residential estate (Figure One). The Project was referred to the Department of Agriculture, Water and the Environment (DAWE; formerly known as Department of the Environment (DotE)) (now the Department of Climate Change, Energy, the Environment and Water (DCCEEW)) on 16 November 2012 and conditionally approved under EPBC 2012/6631 on 18 July 2013, under Section 130 (1) and 133 of the EPBC Act. The development was determined to be a 'Controlled Action' due to potential for significant impacts on listed 'Threatened' species and communities (Carnaby's Black-Cockatoo).

Variations to conditions of EPBC 2012/6631 have subsequently been approved by the Minister; 21 July 2014, 7 April 2016, 25 May 2016 and 26 October 2020. A consolidated notice which includes all changes to the approval is in Appendix A.

The action substantially commenced on 4 February 2015.

Figure 1: Jindee Concept Development Plan - clearing in the reporting period.



File Name: C:\Users\bsunderland\JBS&G Australia\JBS&G - DCS - Internal - Documents\Projects\Estates Development Company\68056 Jindee Enviro Support\GIS\02_Map\Projects\68056_jindee.aprx
 Image Reference: www.nsatmap.com.au - Imagery Date: 1 February 2025

2. Current Status

Activities undertaken during the audit period (4 February 2024 to 3 February 2025) included:

- Clearing of 11.12ha of native vegetation which consists of 2.70ha of CBC foraging habitat
- Commencement of construction of Release 12.
- Dust control over open area
- Fire break maintenance
- Weed control

Due to the change in lot identification numbers brought about by the transfer of ownership of the Parks and Recreation areas in May 2016, as required by Condition 11, and the creation of individual residential land titles for Stage 1, the proposal site lots defined in the approval are not the same as the lots described in the Conservation Management Plan (CMP) (Strategen 2016a) and Clearing and Revegetation Management Plan (CRMP) (Strategen 2016b). However, the areas described in each of these documents are identical. The CMP (Rev 8) and the CRMP (Rev 7), with the change of lot identification numbers, were approved by the Minister on 17 February 2021.

3. Audit Methodology

3.1 Purpose and scope

This document has been prepared for Westminster (the approval holder) to fulfil the requirements of Condition 3 of EPBC 2012/6631. Condition 3 requires the approval holder to publish an annual report for the previous twelve-month period, addressing compliance with each condition of EPBC 2012/6631 (Appendix A); as follows:

“Within three months of every 12 month anniversary of the commencement of the action, the person taking the action must publish a report on their website addressing compliance with the conditions of approval over the previous 12 months, including implementation of the management plans as specified in the conditions. Documentary evidence providing proof of the date of publication must be provided to the department at the same time the compliance report is published. The approval holder must notify the department in writing of any non-compliance with conditions of this approval no later than two business days of becoming aware of the non-compliance.”

This ACR (2024) addresses the conditions of EPBC 2012/6631 and implementation of the CMP (Rev 8, Strategen 2021a) and CRMP (Rev 7, Strategen 2021b), required by Condition(s) 10 and 12 of EPBC 2012/6631, respectively.

3.2 Audit period

The audit period for this ACR is 4 February 2024 and 3 February 2025, with the report to be published by 5 May 2024.

3.3 Methodology

Site inspections and desktop audit were undertaken by lead environmental auditor Andrea Wills and project scientist Brenton Hills, the findings of which were used to prepare this ACR (2024-25). Key persons

consulted during the audit are listed in Table 3.1. A review of documentation was also undertaken to support the audit.

Table 3.1: Persons consulted.

Person and Position	Organisation	Purpose
Jimmy Tharpe, Project Manager	Estates Development Company	To obtain verifiable evidence to assist in determining compliance with EPBC 2012/6631.
Oliver Walsh, Principal Civil Engineer	Omeo Consulting	
John Barry, Project Manager	Wormall Civil	
Shane Hosking, Supervisor	Wormall Civil	
Mick Tadic, Supervisor	Wormall Civil	
Tatum Doran, WHSEQ Advisor	Wormall Civil	
Tenille Scali, WHSEQ Project Administrator	Wormall Civil	

3.4 Audit terminology

The 'Status' field of the audit tables (refer to Table 4-2, Table B.1 and Table C.1) describes the implementation of actions and compliance with the approval. DCCEEW (2023) has published Annual Compliance Report Guidelines and terminology (Table 4-1) from this guidance which was applied in this audit.

Table 3.2: Action implementation status (DCCEEW 2023)

Status	Acronym	Description
Compliant	C	'Compliance' is achieved when all the requirements of a condition have been met, including the implementation of management plans or other measures required by those conditions.
Potentially non-compliant	PNC	A designation of 'non-compliant' must be given where the requirements of a condition or elements of a condition, including the implementation of management plans and other measures, have not been met.
Not Applicable	N/A	A designation of 'not applicable' must be given where the requirements of a condition or elements of a condition fall outside of the scope of the current reporting period. For example, a condition that applies to an activity that has not yet commenced.

4. Audit Results

The results of the audit of the 17 conditions of EPBC 2012/6631 are shown in Table 4.1. The results of the audit of compliance with the key actions contained within the CMP and CRMP are outlined in Appendix B and Appendix C, respectively.

4.1 Assessment of Compliance

4.1.1 Compliance with EPBC conditions

Of the 35 sub-conditions contained within EPBC 2012/6631 (Table 4.1):

- 23 sub-conditions were assessed to be 'Compliant', with eleven of those identified as 'Completed'
- 12 sub-conditions were assessed to be 'Not applicable'
- zero were found to be 'Potentially Non-compliant'

4.1.2 Conformance with the Conservation Management Plan

Of the 46 key commitments identified from the CMP (Appendix B):

- 32 commitments were assessed to be 'Compliant', with one of those identified as 'Complete'
- 13 commitments were assessed to be 'Not applicable'
- One commitment was assessed to be 'Potentially Non-compliant'

4.1.3 Conformance with the Clearing and Revegetation Management Plan

Of the 42 key commitments identified from the CRMP (Appendix C):

- Six commitments were assessed to be 'Compliant', with three of those identified as 'Complete'
- 36 commitments were assessed to be 'Not applicable'; and
- Zero commitments were assessed to be 'Potentially Non-compliant'.

4.2 Potential Non-compliance

No conditions of the approval were identified to be potentially non-compliant.

The commitment assessed to be potentially non-compliant related to monitoring for pests / feral animals / domestic animals in the retained CBC habitat in the northern portion of the eastern ROS area. This was determined as a non-compliance in the 2024 Annual Compliance Report and notified to the Department within that report on 06/05/2024.

Monitoring will be undertaken immediately (prior to 31 May 2025) to correct the potential non-compliance by a suitably qualified professional under contract by EDC. Follow up surveys will be undertaken in Spring annually (from Spring 2025) to prevent recurrence.

5. New Environmental Risks

No new environmental risks were identified in the reporting period.

Table 4.1: EPBC 2012/6631 Audit table

Condition # / Reference	Criteria	Timing	Verification Method	Evidence	Determination	Compliance Finding
EPBC Approval 2012/6631 Condition 1		Within 30 days after the commencement of the action, the approval holder must advise the Department in writing of the actual date of commencement.				
EPBC 1	Advise the Department of the actual date of commencement.	Within 30 days after commencement of the action.	Written correspondence to the Department	R02_65751 Jindee ACR 2024 (Rev 0)	As reported in the 2024 ACR (R02), this item was assessed as Complete during a previous audit period.	Complete
EPBC Approval 2012/6631 Condition 2		The person taking the action must maintain accurate records substantiating all activities associated with or relevant to the conditions of approval, including measures taken to implement the management plans required by this approval, and make them available upon request to the Department. Such records may be subject to audit by the Department or an independent auditor in accordance with section 458 of the EPBC Act or used to verify compliance with the conditions of approval. Summaries of audits will be posted on the Department's website. The results of audits may also be publicized through the general media.				
EPBC 2A	Maintain accurate records substantiating all activities associated with or relevant to the conditions of approval and implementation of management plans.	Ongoing	Compliance Audit	R01_JBSG 2025 ACR Appendix D	Accurate records for all applicable conditions have been maintained and were available during the audit as listed in the Evidence Register in Appendix D (R01).	Compliant
EPBC 2B	Make compliance records available to the Department on request.	Overall	Written correspondence with the Department	C01_2012-6631 Westminster Jindee show cause April 2024 C04_Westminster Response to DCCEEW Show Cause Letter	The Department requested compliance records regarding Condition 14 and Condition 15 of the approval in the reporting period 04/04/2024 (C01) within 20 business days (03/05/2024). The approval holder provided the required compliance records to DCCEEW 02/05/2024 (C04).	Compliant
EPBC Approval 2012/6631 Condition 3		Within three months of every 12-month anniversary of the commencement of the action, the approval holder must publish a report on the website addressing compliance with the conditions of approval over the previous 12 months, including implementation of the management plans as specified in the conditions. Documentary evidence providing proof of the date of publication must be provided to the Department at the same time the compliance report is published. The approval holder must notify the Department in writing of any non-compliance with any conditions of this approval no later than two business days of becoming aware of the non-compliance.				
EPBC 3A	Publish a report on the website addressing compliance with the conditions of approval over the previous 12 months, including implementation of the management plans as specified in the conditions.	Within three months of every 12-month anniversary of the commencement of the action	Compliance audit confirms website has link to ACR location.	R02_65751 Jindee ACR 2024 (Rev 0) E02_Website Screenshot 2025-02-11	The ACR (R02) was prepared and published on the Jindee website on 06 May 2023 (Monday), within three months of the 12-month anniversary of commencement of the action (4 February). The ACR (R02) is available on the Jindee website and sighted by the auditor on 11/02/2025 (E02). https://www.jindee.com.au/documents/epbc/	Compliant
EPBC 3B	Documentary evidence providing proof of the date of publication must be provided to the Department at the same time the compliance report is published.	Within three months of every 12-month anniversary of the commencement of the action	Submission email to DCCEEW containing link to website with ACR link location.	C02_Notice of EPBC Act Approval 2013_6631 2024 Annual Compliance Report for Jindee Innovation Project	Documentary evidence of publication was submitted to DCCEEW on 06/05/2023 (C01) with a link to the EDC website.	Compliant
EPBC 3C	Notify the Department of any non-compliance with any conditions of this approval.	No later than two business days of becoming aware of the non-compliance	Notification to the Department in writing.		No 'Potential non-compliances' were identified during the 2025 reporting period.	Compliant
EPBC Approval 2012/6631 Condition 4		Upon the direction of the Minister, the person taking the action must ensure that an independent audit of compliance with the conditions of approval is conducted and a report submitted to the Minister. The independent auditor must be approved by the Minister prior to the commencement of the audit. Audit criteria must be agreed to by the Minister and the audit report must address the criteria to the satisfaction of the Minister.				
EPBC 4A	Ensure that an independent audit of compliance with the conditions of approval is conducted and a report submitted to the Minister.	Upon the direction of the Minister to undertake an independent audit	Independent audit report	M01_68056 ACR Evidence Request Response Rev 0	Westminster Estates Pty Ltd was not directed to conduct an independent audit during the reporting period.	Not Applicable

Condition # / Reference	Criteria	Timing	Verification Method	Evidence	Determination	Compliance Finding
EPBC 4B	The independent auditor must be approved by the Minister prior to the commencement of the audit.	Prior to the commencement of the independent audit.	Audit plan containing proposed independent auditors approval from the Department.	Refer to EPBC 4A	Refer to EPBC 4A	Not Applicable
EPBC 4C	Audit criteria must be agreed to by the Minister and the audit report must address the criteria to the satisfaction of the Minister.	Prior to the commencement of the independent audit.	Audit plan containing proposed audit criteria approval from the Department.	Refer to EPBC 4A	Refer to EPBC 4A	Not Applicable
EPBC Approval 2012/6631 Condition 5		Revision of Action Management Plans The approval holder may, at any time, apply to the Minister for a variation to an action management plan approved by the Minister under Conditions 10 and 12, or as subsequently revised in accordance with these conditions, by submitting an application in accordance with the requirements of section 143A of the EPBC Act. If the Minister approves a Revised Action Management Plan (RAMP) then, from the date specified, the approval holder must implement the RAMP in place of the previous action management plan.				
EPBC 5a	The approval holder may apply to the Minister for a variation to an action management plan.	At any time	Minister approval for the RAMP	R03_JBSG_Jindee_CRMP_Rev 7 R04_JBSG_Jindee_CMP_Rev 8 C03_Confirmation of Jindee current CMP and CRMP versions	The approval holder did not apply to the Minister for a variation to an action management plan in the reporting period (C03). There were no revisions to the CMP (R04) and CRMP (R03) previously approved by the Department on 17 February 2021.	Not Applicable
EPBC 5b	Implement the approved RAMP in place of the previous action management plan.	On approval of the RAMP	Compliance assessment	C03_Confirmation of Jindee current CMP and CRMP versions	There was no Revised Action Management Plan to Implement in the reporting period (C03).	Not Applicable
EPBC Approval 2012/6631 Condition 5A		The approval holder may choose to revise an action management plan approved by the Minister under conditions 10 and 12, or as subsequently revised in accordance with these conditions, without submitting it for approval under section 143A of the EPBC Act, if the taking of the action in accordance with the RAMP would not be likely to have a new or increased impact.				
EPBC 5c	The approval holder may revise an action management plan without submitting it for approval if the taking of the action in accordance with the RAMP would not be likely to have a new or increased impact.	At any time	Revised an action management plan	R03_JBSG_Jindee_CRMP_Rev 7 R04_JBSG_Jindee_CMP_Rev 8	The approval holder did not apply to the Minister for a variation to an action management plan in the reporting period (C03). There were no revisions to the CMP (R04) and CRMP (R03) previously approved by the Department on 17 February 2021.	Not Applicable
EPBC Approval 2012/6631 Condition 5B		5B If the approval holder makes the choice under condition 5A to revise an action management plan without submitting it for approval, the approval holder must: a. Notify the Department in writing that the approved action management plan has been revised and provide the Department with: i. an electronic copy of the RAMP; ii. an electronic copy of the RAMP marked up with track changes to show the differences between the approved action management plan and the RAMP; iii. an explanation of the differences between the approved action management plan and the RAMP; iv. the reasons the approval holder considers that taking the action in accordance with the RAMP would not be likely to have a new or increased impact; and v. written notice of the date on which the approval holder will implement the RAMP (RAMP implementation date), being at least 20 business days after the date of providing notice of the revision of the action management plan, or a date agreed to in writing with the Department. b. Subject to condition 5D, implement the RAMP from the RAMP implementation date.				
EPBC 5d	If the approval holder revises an action management plan without submitting it for approval, the approval holder must notify the Department in writing that the approved action management plan has been revised and provide the Department with items (i) to (v).	At least 20 days prior to implementation date	Notification submission to the Department.	Refer to EPBC 5c	Refer to EPBC 5c	Not Applicable
EPBC 5e	The approval holder must implement the RAMP from the RAMP implementation date (as per notification to the Department).	at least 20 days after notification to the Department	Compliance assessment of implementation of the RAMP.	C03_Confirmation of Jindee current CMP and CRMP versions	There was no Revised Action Management Plan to Implement in the reporting period (C03).	Not Applicable

Condition # / Reference	Criteria	Timing	Verification Method	Evidence	Determination	Compliance Finding
EPBC Approval 2012/6631 Condition 5C		The approval holder may revoke its choice to implement a RAMP under Condition 5A at any time by giving written notice to the Department. If the approval holder revokes the choice under Condition 5A, the approval holder must implement the action management plan in force immediately prior to the revision undertaken under Condition 5A.				
EPBC 5f	Give notice to the Department if the approval holder chooses to revoke its choice to implement a RAMP under Condition 5A.	At any time	Written notice to the Department.	Refer to EPBC 5c	Refer to EPBC 5c	Not Applicable
EPBC 5g	Implement the action management plan in force immediately prior to the revision undertaken under Condition 5A.	At any time	Compliance assessment	Refer to EPBC 5c	Refer to EPBC 5c	Not Applicable
EPBC Approval 2012/6631 Condition 5D		If the Minister gives a notice to the approval holder that the Minister is satisfied that the taking of the action in accordance with the RAMP would be likely to have a new or increased impact, then: <ul style="list-style-type: none"> a. Condition 5A does not apply, or ceases to apply, in relation to the RAMP; and b. The approval holder must implement the action management plan specified by the Minister in the notice. 				
EPBC 5h	If the Minister gives notice that the taking of the action in accordance with the RAMP would be likely to have a new or increased impact, the approval holder must implement the action management plan specified by the Minister given in notice.	At any time	Notice given by the Minister	R03_JBSG_Jindee_CRMP_Rev 7 R04_JBSG_Jindee_CMP_Rev 8 C05_DAWE_Jindee_CMP CRMP approval letter_17022021	The Minister has not given notice that the taking of the action in accordance with the RAMP would be likely to have a new or increased impact.	Not Applicable
EPBC Approval 2012/6631 Condition 6		REVOKED 07/04/2016				
EPBC Approval 2012/6631 Condition 7		Unless otherwise agreed to in writing by the Minister, the approval holder must publish the management plans referred to in these conditions of approval on the website. The management plans must be published on the website within 1 month of being approved by the Minister or being submitted under Condition 5B.				
EPBC 7	Publish the management plans referred to in these conditions of approval on the website.	within 1 month of being approved by the Minister or being submitted under Condition 5B	Compliance audit confirms website has link to each management plan location.	R03_JBSG_Jindee_CRMP_Rev 7 R04_JBSG_Jindee_CMP_Rev 8 E02_Website Screenshot 2025-02-11	The CRMP (R03) and CMP (R04) submitted to the Department for review on 9 December 2020. The Jindee website was updated to show to revised management plans on the 17 February 2021. These plans continue to be available on the Jindee website (E02) at: https://www.jindee.com.au/documents/epbc/	Compliant (complete)
EPBC Approval 2012/6631 Condition 8		If, at any time after five (5) years from the date of this approval, the approval holder has not substantially commenced the action, then the approval holder must not substantially commence the action without the written agreement of the Minister.				
EPBC 8A	The approval holder must substantially commence the action prior to 18/07/2018.	Prior to 18/07/2018	Written notice of substantial commencement to the Department.	R02_65751 Jindee ACR 2024 (Rev 0)	As reported in the 2024 ACR (R02), the action substantially commenced on 4 February 2015, within five years of the date of the approval (18/07/2013).	Compliant (complete)
EPBC 8B	The approval holder must obtain written agreement from the Minister to commence the action after the 18/07/2018.	After the 18/07/2018	Written approval from the Minister.	Not applicable	The proposal was substantially commenced prior to the 18/07/2018 within five years of the date of the approval.	Not applicable
EPBC Approval 2012/6631 Condition 9		To mitigate impacts to Carnaby's Black-Cockatoo (<i>Calyptorhynchus latirostris</i>): <ul style="list-style-type: none"> a. At least 1.72 hectares of Carnaby's Black-Cockatoo foraging habitat, must be retained and clearing of Carnaby's Black-Cockatoo foraging habitat must not exceed 0.30 hectares within the areas shaded in green at Attachment A1; b. Clearing of Carnaby's Black-Cockatoo habitat in the areas shaded blue at Attachment A1 must not exceed 40.57 hectares; and c. Total clearing of Carnaby's Black-Cockatoo foraging habitat within areas shaded blue and areas shaded green at Attachment A1 must not exceed 43.45 hectares. 				
EPBC 9A	The proponent must retain at least 1.72 hectares of Carnaby's Black-Cockatoo foraging habitat within the areas shaded in green at Attachment A1.	Overall	Aerial imagery comparison	G01_68056_Jindee_A4L_01_R01 Clearing Figure	The proponent has retained 1.87 ha (>1.72 ha) of CBC foraging habitat within the areas shaded green at Attachment A1 (G01).	Compliant

Condition # / Reference	Criteria	Timing	Verification Method	Evidence	Determination	Compliance Finding
EPBC 9B	The proponent must not clear more than 0.30 hectares of Carnaby's Black-Cockatoo foraging habitat within the areas shaded in green at Attachment A1.	Overall	Aerial imagery comparison	G01_68056_Jindee_A4L_01_R01 Clearing Figure	There was no clearing of areas shaded green in attachment A1 of the EPBC Approval in the reporting period. Historically, there has been no clearing of areas shaded green in attachment A1 of the EPBC Approval. Existing cleared areas within the areas shaded in green at Attachment A1 total 0.143 ha.	Compliant
EPBC 9C	The proponent must not clear more than 40.57 hectares of Carnaby's Black-Cockatoo habitat in the areas shaded blue at Attachment A1.	Overall	Aerial imagery comparison	G01_68056_Jindee_A4L_01_R01 Clearing Figure	The areas shaded blue in Attachment A1 cover an area of 38.01 ha (therefore clearing cannot exceed 40.57 ha). The total CBC habitat cleared in the blue shaded area in Attachment A1 is 20.88 ha (G01).	Compliant
EPBC 9D	The proponent must not clear more than 43.45 hectares of Carnaby's Black-Cockatoo foraging habitat within areas shaded blue and areas shaded green at Attachment A1.	Overall	Aerial imagery comparison	G01_68056_Jindee_A4L_01_R01 Clearing Figure	The total CBC habitat cleared in the blue and green shaded areas in Attachment A1 is 20.88 ha (G01).	Compliant
EPBC Approval 2012/6631 Condition 10		To protect and enhance habitat for Carnaby's Black-Cockatoo, the approval holder must prepare and submit a <i>Conservation Management Plan</i> (the plan) detailing management of habitat for Carnaby's Black-Cockatoo that is to be retained on the proposal site, for the Minister's approval. The plan must include: <ul style="list-style-type: none"> a. Measures to physically delineate areas that will be retained; b. Erosion and dust control measures during construction c. The management of weeds, Phytophthora dieback, bushfire and feral animals d. Identification of any degraded habitat and how those areas will be managed e. A monitoring program for Carnaby's Black-Cockatoo and their habitat f. Details of who will be responsible for the long-term management of the retained land, and how the land will be protected in the long-term g. A commitment to fund all management actions in the two Parks and Recreation areas within the site boundary marked in green at <u>Attachment B</u> until the management of those areas is handed over to another party, including the amount of funding that will be allocated to these management actions h. Performance indicators and corrective actions i. Roles and responsibilities; and j. Timeframes for the implementation of the above measures. If the Minister approves the plan, the approved plan must be implemented.				
EPBC 10A	Prepare and submit a Conservation Management Plan including items (a) to (j).	Overall	Submission correspondence Minister approval for the CMP	R04_JBSG_Jindee_CMP_Rev 8 C05_DAWA_Jindee CMP CRMP approval letter_17022021	The CMP (R04) was revised (Rev 8) and reapproved by a delegate of the Minister on 17/10/2021, and contains the commitments as required.	Compliant (complete)
EPBC 10B	Implement the CMP.	Overall	Compliance Assessment	R01_JBSG 2025 ACR Appendix B	The key actions of the CMP were assessed during this reporting period and it was found that the CMP is being implemented (Appendix B). Of the 40 key actions: <ul style="list-style-type: none"> • 32 were 'Compliant,' of those one was completed • 13 were 'Not applicable' at time of audit • One was found to be 'Potentially Non-compliant' 	Compliant
EPBC Approval 2012/6631 Condition 11		Within 5 years of the substantial commencement of the action, the approval holder must provide the department with written evidence that the two green areas of Parks and Recreation within the site boundary at Attachment B, have been granted to the City of Wanneroo for the purpose of conservation.				
EPBC 11	Provide evidence that the two green areas of Parks and Recreation within the site boundary at Attachment B, have been granted to the City of Wanneroo for the purpose of conservation.	Within 5 years of the substantial commencement	Written evidence of land grant to CoW	R02_65751 Jindee ACR 2024 (Rev 0)	As reported in the 2024 ACR (R02), this item was assessed as complete during a previous reporting period. The approval holder submitted evidence to DEE on 06/09/2016 to demonstrate the areas in Attachment B were transferred to the Western Australian Planning Commission and the Certificates of Title were issued on 20/05/2016. This has been conducted within 5 years of substantial commencement (04/02/2025).	Compliant (complete)

Condition # / Reference	Criteria	Timing	Verification Method	Evidence	Determination	Compliance Finding
EPBC Approval 2012/6631 Condition 12		<p>To mitigate impacts to Carnaby's Black-Cockatoo, the approval holder must prepare and submit a Clearing and Revegetation Management Plan for the Minister's approval. The plan must include:</p> <ol style="list-style-type: none"> a. A commitment to the staged collection of native seed prior to clearing from the areas shaded blue and areas shaded green at Attachment A1, prior to the clearing of these areas, for use in revegetation; b. A commitment to store native seed and either use it on-site for revegetation or transport it to a seed bank or receiving site(s) where revegetation is being undertaken by WA DPaW or another receiving party (or parties); c. Detailed protocols for collection and use of native seed required by condition 12 (a) and 12 (b) including: <ol style="list-style-type: none"> i. the optimal methodology for native seed collection from the proposal site; ii. how clearing will be staged to best harvest utilise the native seed resource for revegetation; iii. how native seed will be stored and transported; and iv. onsite supervision and implementation monitoring mechanisms. <p>The approval holder must implement the Clearing and Revegetation Management Plan approved by the Minister in writing.</p>				
EPBC 12A	Prepare and submit a Clearing and Revegetation Management Plan including items (a) to (c).	Overall	Submission correspondence Minister approval for the CRMP	R03_JBSG_Jindee_CRMP_Rev 7 C05_DAWA_Jindee CMP CRMP approval letter_17022021	The CRMP (R03) was revised (Rev 7) and reapproved by a delegate of the Minister on 17/10/2021, and contains the commitments as required.	Compliant (complete)
EPBC 12B	Implement the Clearing and Revegetation Management Plan.	Overall	Compliance Assessment	R01_JBSG 2025 ACR Appendix C	<p>The key actions of the CRMP were assessed during this reporting period and it was found that the CRMP is being implemented (Appendix C). Of the 40 key actions:</p> <ul style="list-style-type: none"> • six were 'Compliant,' of those three were completed • 36 were 'Not applicable' at time of audit • Zero were found to be 'Potentially Non-compliant' 	Compliant
EPBC Approval 2012/6631 Condition 13		<p>The person taking the action must not undertake any clearing of habitat for Carnaby's Black-Cockatoo on the proposal site unless:</p> <ol style="list-style-type: none"> a. The Conservation Management Plan required under Condition 10 has been approved by the Minister; and b. The Clearing and Revegetation Management Plan required under Condition 12 has been approved by the Minister. 				
EPBC 13A	Do not undertake clearing of Carnaby's Black Cockatoo habitat until the CMP has been approved.	Prior to clearing	Minister approval for the CMP	R02_65751 Jindee ACR 2024 (Rev 0)	As reported in the 2024 ACR (R02), this item was assessed as Complete during a previous reporting period. The CRMP (Rev 4) was initially approved by delegate of the Minister for the Environment on the 21 July 2014 prior to clearing of habitat on 4 February 2015.	Compliant (complete)
EPBC 13B	Do not undertake clearing of Carnaby's Black Cockatoo habitat until the CMP has been approved.	Prior to clearing	Minister approval for the CRMP	R02_65751 Jindee ACR 2024 (Rev 0)	As reported in the 2024 ACR (R02), this item was assessed as Complete during a previous reporting period. The CMP (Rev 4) was initially approved by delegate of the Minister for the Environment on the 21 July 2014 prior to clearing of habitat on 4 February 2015.	Compliant (complete)
EPBC Approval 2012/6631 Condition 14		<p>To offset the loss of habitat for Carnaby's Black-Cockatoo, prior to the commencement of construction, the person taking the action must provide the Department with written evidence of the provision of funds to WA DPaW for the acquisition of the offset property on Lot 24, Mimegarra Road, Lancelin, WA (Attachment C). The written evidence must be accompanied with the offset attributes and shapefile.</p>				

Condition # / Reference	Criteria	Timing	Verification Method	Evidence	Determination	Compliance Finding
EPBC 14	Provide written evidence, offset attributes and shapefile evidence to the Department that funds have been provided to DPaW for the acquisition of the offset property on Lot 24, Mimegarra Road, Lancelin, WA (Attachment C).	Prior to the commencement of construction	Written correspondence to the Department	R02_65751 Jindee ACR 2024 (Rev 0) C04_Westminster Response to DCCEEW Show Cause Letter C01_2012-6631 Westminster Jindee show cause April 2024	As reported in the 2024 ACR(R02), written evidence of the provision of the required funds to WA Department of Parks and Wildlife) (now known as Department of Biodiversity, Conservation and Attractions) was provided to DEE on 6 January 2015 prior to construction commencing. The offset attributes and shapefile were provided 2 March 2015. Evidence of this submission was provided to DCCEEW 02/05/2024 (C04) in the reporting period in response to a show cause notice from DCCEEW dated 04/04/2024 (C01).	Compliant (complete)
EPBC Approval 2012/6631 Condition 15		This condition was added to the approval on 7 April 2016; To offset the additional loss of habitat for Carnaby's Black-Cockatoo, the approval holder must provide the Department with written evidence of the provision of funds to WA DPaW to acquire 34 hectares of Carnaby's Black-Cockatoo habitat (the additional offset). The written evidence along with the offset attributes and Shapefile must be provided to the Department prior to undertaking the clearing of up to 2.88 hectares within the areas shaded green at Attachment A as specified in condition 9(a) prior to the variation made on the date this instrument was signed.				
EPBC 15	Provide written evidence along with the offset attributes and Shapefile to the Department that funds have been provided to WA DPaW to acquire 34 hectares of Carnaby's Black-Cockatoo habitat (the additional offset).	Prior to 26/10/2020 (prior to any clearing of 2.88 ha of Carnaby's Black-Cockatoo habitat referred to Condition 9(a))	Written correspondence to the Department	R02_65751 Jindee ACR 2024 (Rev 0) C04_Westminster Response to DCCEEW Show Cause Letter C01_2012-6631 Westminster Jindee show cause April 2024	As reported in the 2024 ACR(R02), written evidence of provision of funds to WA Department of Parks and Wildlife)(now known as Department of Biodiversity, Conservation and Attractions), along with offsets attributes and spatial data were provided to the Minister on 2 June 2016 prior to any clearing of 2.88 ha of Carnaby's Black-Cockatoo habitat referred to Condition 9(a). Evidence of this submission was provided to DCCEEW 02/05/2024 (C04) in the reporting period in response to a show cause notice from DCCEEW dated 04/04/2024 (C01).	Compliant (complete)
EPBC Approval 2012/6631 Condition 16		This condition was added to the approval on 26 October 2020; To offset the further additional loss of habitat for Carnaby's Black-Cockatoo, the approval holder must provide a second additional offset comprising either: a. Legal securement in perpetuity of an offset site that: i. is a property containing no less than 40 ha of Carnaby's Black-Cockatoo habitat with a habitat quality score of 8 or more out of 10 in accordance with the Environmental Offsets Policy and maintained for conservation; ii. fully offsets the further additional loss of habitat in accordance with the Environmental Offsets Policy; and iii. has been agreed to by the Minister in writing, prior to its legal securement; OR b. A provision of funds to the WA DBCA that demonstrably provides all necessary funding for the purchase of at least 40 hectares within an offset site containing no less than 40 ha of Carnaby's Black-Cockatoo habitat with a habitat quality score of 8 or more out of 10 in accordance with the Environmental Offsets Policy, as agreed by the Minister in writing prior to the provision of the funds.				
EPBC 16	Provide a second additional offset (40 hectares of Carnaby's Black-Cockatoo habitat with a habitat quality score of 8 or more out of 10) by legal securement or provision of funds to DBCA, as agreed by the Minister.	Prior to further additional loss of habitat	Agreement of offset by the Minister Evidence of offset provided	R02_65751 Jindee ACR 2024 (Rev 0)	As reported in the 2024 ACR (R02), the approval holder provided the funds to DBCA 23/08/2023 for the purchase of the property following receipt of the invoice from DBCA 29/07/2023.	Compliant (complete)
EPBC Approval 2012/6631 Condition 17		The approval holder must not commence works that are part of the further additional loss of habitat for Carnaby's Black-Cockatoo until the approval holder has provided the second additional offset required under Condition 16.				
EPBC 17	The approval holder must not commence works that are part of the further additional loss of habitat for Carnaby's Black-Cockatoo until the second additional offset has been provided.	Prior to further additional loss of habitat	Evidence of offset provided	R02_65751 Jindee ACR 2024 (Rev 0)	As reported in the 2024 ACR (R02), the funding was provided to the DBCA 23/08/2023 and the works (clearing 0.02 ha additional habitat) commenced 06/09/2023.	Compliant (complete)

6. References

Department of Climate Change, Energy, the Environment and Water, 2023, *Annual Compliance Report Guidelines, Reporting under the Environment Protection and Biodiversity Conservation Act 1999*, Commonwealth of Australia, Canberra.

Strategen 2021a, *Jindee Innovation Project Conservation Management Plan (Rev 8)*, prepared for Westminster Estates Pty Ltd by Strategen, December 2020

Strategen 2021b, *Jindee Innovation Project Clearing and Revegetation Management Plan (Rev 7)*, prepared for Westminster Estates Pty Ltd by Strategen, December 2020

7. Limitations

Scope of services

This report (“the report”) has been prepared by JBS&G in accordance with the scope of services set out in the contract, or as otherwise agreed, between the Client and JBS&G. In some circumstances, a range of factors such as time, budget, access and/or site disturbance constraints may have limited the scope of services. This report is strictly limited to the matters stated in it and is not to be read as extending, by implication, to any other matter in connection with the matters addressed in it.

Reliance on data

In preparing the report, JBS&G has relied upon data and other information provided by the Client and other individuals and organisations, most of which are referred to in the report (“the data”). Except as otherwise expressly stated in the report, JBS&G has not verified the accuracy or completeness of the data. To the extent that the statements, opinions, facts, information, conclusions and/or recommendations in the report (“conclusions”) are based in whole or part on the data, those conclusions are contingent upon the accuracy and completeness of the data. JBS&G has also not attempted to determine whether any material matter has been omitted from the data. JBS&G will not be liable in relation to incorrect conclusions should any data, information or condition be incorrect or have been concealed, withheld, misrepresented or otherwise not fully disclosed to JBS&G. The making of any assumption does not imply that JBS&G has made any enquiry to verify the correctness of that assumption.

The report is based on conditions encountered and information received at the time of preparation of this report or the time that site investigations were carried out. JBS&G disclaims responsibility for any changes that may have occurred after this time. This report and any legal issues arising from it are governed by and construed in accordance with the law as at the date of this report.

Environmental conclusions

Within the limitations imposed by the scope of services, the preparation of this report has been undertaken and performed in a professional manner, in accordance with generally accepted environmental consulting practices. No other warranty, whether express or implied, is made, including to any third parties, and no liability will be accepted for use or interpretation of this report by any third party.

The advice herein relates only to this project and all results conclusions and recommendations made should be reviewed by a competent person with experience in environmental investigations, before being used for any other purpose.

JBS&G accepts no liability for use or interpretation by any person or body other than the client who commissioned the works. This report should not be reproduced without prior approval by the client, or amended in any way without prior approval by JBS&G or reproduced other than in full, including all attachments as originally provided to the client by JBS&G.

Appendix A EPBC Approval 2012/6631



VARIATION OF CONDITIONS ATTACHED TO APPROVAL

Jindee Innovation Project, Jindalee, WA (EPBC 2012/6631)

This decision to vary conditions of approval is made under section 143 of the *Environment Protection and Biodiversity Conservation Act 1999* (EPBC Act).

Approved action

Person to whom the approval is granted Westminster Estates Pty Ltd
ABN: 48 008 675 081

Approved action To clear native vegetation on Lot 9036 and Part Lot 3054 Marmion Avenue, Jindalee, WA, for development of a residential estate [See EPBC Act referral 2012/6631].

Variation

Variation of conditions attached to approval The variation is:

- Delete conditions 3, 5, 5A, 5B, 5C, 7, 9, 12 and 15 and the definition of New or increased impact attached to the approval and substitute with the conditions and definitions specified in the table below
- Revoke the definition of Primary feeding plants attached to the approval
- Add new conditions 5D, 5E, 16 and 17 specified in the table below
- Add new definitions of Business day, Environmental Offsets Policy, Legal securement, Further additional loss of habitat and WA DBCA as specified in the table below
- Add new Attachment A1 as specified in the table below

Date of effect This variation has effect on the date the instrument is signed

Person authorised to make decision

Name and position Declan O'Connor-Cox
Assistant Secretary A/g
Assessments (Vic, Tas) and Post Approvals Branch

Signature

Date of decision

26 October 2020

Date of decision	Conditions attached to approval
Original dated 18/7/2013	1. Within 30 days after the commencement of the action, the approval holder must advise the Department in writing of the actual date of commencement .
Original dated 18/7/2013	2. The approval holder must maintain accurate records substantiating all activities associated with or relevant to the conditions of approval, including measures taken to implement the management plans required by this approval, and make them available upon request to the Department . Such records may be subject to audit by the Department or an independent auditor in accordance with section 458 of the EPBC Act, or used to verify compliance with the conditions of approval. Summaries of audits will be posted on the Department's website. The results of audits may also be publicised through the general media.
As varied on the date this instrument was signed	3. Within three months of every 12 month anniversary of the commencement of the action, the approval holder must publish a report on the website addressing compliance with the conditions of approval over the previous 12 months, including implementation of the management plans as specified in the conditions. Documentary evidence providing proof of the date of publication must be provided to the Department at the same time the compliance report is published. The approval holder must notify the Department in writing of any non-compliance with any conditions of this approval no later than two business days of becoming aware of the non-compliance.
Original dated 18/7/2013	4. Upon the direction of the Minister , the approval holder must ensure that an independent audit of compliance with the conditions of approval is conducted and a report submitted to the Minister . The independent auditor must be approved by the Minister prior to the commencement of the audit. Audit criteria must be agreed to by the Minister and the audit report must address the criteria to the satisfaction of the Minister .
As varied on the date this instrument was signed	<p>Revision of action management plans</p> <p>5. The approval holder may, at any time, apply to the Minister for a variation to an action management plan approved by the Minister under conditions 10 and 12, or as subsequently revised in accordance with these conditions, by submitting an application in accordance with the requirements of section 143A of the EPBC Act. If the Minister approves a revised action management plan (RAMP) then, from the date specified, the approval holder must implement the RAMP in place of the previous action management plan.</p>
As varied on the date this instrument was signed	5A. The approval holder may choose to revise an action management plan approved by the Minister under conditions 10 and 12, or as subsequently revised in accordance with these conditions, without submitting it for approval under section 143A of the EPBC Act , if the taking of the action in accordance with the RAMP would not be likely to have a new or increased impact .
As varied on the date this instrument was signed	<p>5B. If the approval holder makes the choice under condition 5A to revise an action management plan without submitting it for approval, the approval holder must:</p> <ul style="list-style-type: none"> (a) notify the Department in writing that the approved action management plan has been revised and provide the Department with: <ul style="list-style-type: none"> i. an electronic copy of the RAMP; ii. an electronic copy of the RAMP marked up with track changes to show the differences between the approved action management plan and the RAMP;

Date of decision	Conditions attached to approval
	<ul style="list-style-type: none"> iii. an explanation of the differences between the approved action management plan and the RAMP; iv. the reasons the approval holder considers that taking the action in accordance with the RAMP would not be likely to have a new or increased impact; and v. written notice of the date on which the approval holder will implement the RAMP (RAMP implementation date), being at least 20 business days after the date of providing notice of the revision of the action management plan, or a date agreed to in writing with the Department. <p>(b) subject to condition 5D, implement the RAMP from the RAMP implementation date.</p>
As varied on the date this instrument was signed	5C. The approval holder may revoke its choice to implement a RAMP under condition 5A at any time by giving written notice to the Department . If the approval holder revokes the choice under condition 5A, the approval holder must implement the action management plan in force immediately prior to the revision undertaken under condition 5A.
As varied on the date this instrument was signed	5D. If the Minister gives a notice to the approval holder that the Minister is satisfied that the taking of the action in accordance with the RAMP would be likely to have a new or increased impact , then: <ul style="list-style-type: none"> (a) condition 5A does not apply, or ceases to apply, in relation to the RAMP; and (b) the approval holder must implement the action management plan specified by the Minister in the notice.
As varied on the date this instrument was signed	5E. At the time of giving the notice under condition 5D, the Minister may also notify that, for a specified period of time, condition 5C does not apply for one or more specified action management plans. Note: conditions 5A, 5B, 5C and 5D are not intended to limit the operation of section 143A of the EPBC Act which allows the approval holder to submit a revised action management plan, at any time, to the Minister for approval.
Variation dated 7/4/2016	6. Revoked
As varied on the date this instrument was signed	7. Unless otherwise agreed to in writing by the Minister , the approval holder must publish the management plans referred to in these conditions of approval on the website . The management plans must be published on the website within 1 month of being approved by the Minister or being submitted under condition 5B.
Original dated 18/7/2013	8. If, at any time after five (5) years from the date of this approval, the approval holder has not substantially commenced the action, then the approval holder must not substantially commence this action without the written agreement of the Minister . Note: The date in condition 8 refers to the date of the approval decision (18 July 2013).
As varied on the date this instrument was signed	9. To mitigate impacts to Carnaby's Black Cockatoo (<i>Calyptorhynchus latirostris</i>): <ul style="list-style-type: none"> (a) At least 1.72 hectares of Carnaby's Black Cockatoo foraging habitat, must be retained and clearing of Carnaby's Black Cockatoo foraging habitat must not exceed 0.30 hectares within the areas shaded in green at <u>Attachment A1</u>;

Date of decision	Conditions attached to approval
	<p>(b) clearing of Carnaby's Black Cockatoo habitat in the areas shaded blue at <u>Attachment A1</u> must not exceed 40.57 hectares; and</p> <p>(c) total clearing of Carnaby's Black Cockatoo foraging habitat within areas shaded blue and areas shaded green at <u>Attachment A1</u> must not exceed 43.45 hectares.</p>
Variation dated 21/7/2014	<p>10. To protect and enhance habitat for Carnaby's Black Cockatoo, the approval holder must prepare and submit a <i>Conservation Management Plan</i> (the plan) detailing management of habitat for Carnaby's Black Cockatoo that is to be retained on the proposal site, for the Minister's approval. The plan must include:</p> <ul style="list-style-type: none"> (a) measures to physically delineate areas that will be retained; (b) erosion and dust control measures during construction; (c) the management of weeds, <i>Phytophthora</i> dieback, bushfire and feral animals; (d) identification of any degraded habitat and how those areas will be managed; (e) a monitoring program for Carnaby's Black Cockatoo and their habitat; (f) details of who will be responsible for the long-term management of the retained land, and how the land will be protected in the long-term; (g) a commitment to fund all management actions in the two Parks and Recreation areas within the site boundary marked in green at <u>Attachment B</u> until the management of those areas is handed over to another party, including the amount of funding that will be allocated to these management actions; (h) performance indicators and corrective actions; (i) roles and responsibilities; and (j) timeframes for the implementation of the above measures. <p>If the Minister approves the plan, the approved plan must be implemented.</p>
Original dated 18/7/2013	<p>11. Within 5 years of the substantial commencement of the action, the approval holder must provide the Department with written evidence that the two green areas of Parks and Recreation within the site boundary at <u>Attachment B</u>, have been granted to the City of Wanneroo for the purpose of conservation.</p>
As varied on the date this instrument was signed	<p>12. To mitigate impacts to Carnaby's Black Cockatoo, the approval holder must submit a <i>Clearing and Revegetation Management Plan</i> for the Minister's approval. The plan must include:</p> <ul style="list-style-type: none"> (a) a commitment to the staged collection of native seed from the areas shaded blue and areas shaded green at <u>Attachment A1</u>, prior to the clearing of these areas, for use in revegetation; (b) a commitment to store native seed and either use it on-site for revegetation or transport it to a seed bank or receiving site(s) where revegetation is being undertaken by WA DPaW or another receiving party (or parties); (c) detailed protocols for staged collection and use of native seed required by conditions 12(a) and 12(b) including:

Date of decision	Conditions attached to approval
	<ul style="list-style-type: none"> i. the optimal methodology for native seed collection from the proposal site; ii. how clearing will be staged to best harvest and utilise the native seed resource for revegetation; iii. how native seed will be stored and transported; and iv. onsite supervision and implementation monitoring mechanisms. <p>The approval holder must implement the <i>Clearing and Revegetation Management Plan</i> approved by the Minister in writing.</p>
Variation dated 21/7/2014	<p>13. The approval holder must not undertake any clearing of habitat for Carnaby's Black Cockatoo on the proposal site unless:</p> <ul style="list-style-type: none"> (a) the <i>Conservation Management Plan</i> required under condition 10 has been approved by the Minister; and (b) the <i>Clearing and Revegetation Management Plan</i> required under condition 12 has been approved by the Minister.
Variation dated 21/7/2014	<p>14. To offset the loss of habitat for Carnaby's Black Cockatoo, prior to the commencement of construction, the approval holder must provide the Department with written evidence of the provision of funds to WA DPaW for the acquisition of the offset property on Lot 24, Mimegarra Road, Lancelin, WA (Attachment C). The written evidence must be accompanied with the offset attributes and Shapefile.</p>
As varied on the date this instrument was signed	<p>15. To offset the additional loss of habitat for Carnaby's Black Cockatoo, the approval holder must provide the Department with written evidence of the provision of funds to WA DPaW to acquire 34 hectares of Carnaby's Black Cockatoo habitat (the additional offset). The written evidence along with the offset attributes and Shapefile must be provided to the Department prior to undertaking the clearing of up to 2.88 hectares within the areas shaded green at Attachment A as specified in condition 9(a) prior to the variation made on the date this instrument was signed.</p>
As varied on the date this instrument was signed	<p>16: To offset the further additional loss of habitat for Carnaby's Black Cockatoo, the approval holder must provide a second additional offset comprising either:</p> <ul style="list-style-type: none"> a) Legal securement in perpetuity of an offset site that: <ul style="list-style-type: none"> i. is a property containing no less than 40 ha of Carnaby's Black Cockatoo habitat with a habitat quality score of 8 or more out of 10 in accordance with the Environmental Offsets Policy and maintained for conservation; and ii. fully offsets the further additional loss of habitat in accordance with the Environmental Offsets Policy; and iii. has been agreed to by the Minister in writing, prior to its legal securement; <p>OR</p> <ul style="list-style-type: none"> b) A provision of funds to the WA DBCA that demonstrably provides all necessary funding for the purchase of at least 40 hectares within an offset site containing no less than 40 ha of Carnaby's Black Cockatoo habitat with a habitat quality score of 8 or more out of 10 in accordance

Date of decision	Conditions attached to approval
	with the Environmental Offsets Policy , as agreed by the Minister in writing prior to the provision of the funds.
As varied on the date this instrument was signed	17. The approval holder must not commence works that are part of the further additional loss of habitat for Carnaby's Black Cockatoo until the approval holder has provided the second additional offset required under Condition 16.

Date of decision	Definitions attached to approval
Variation dated 7/4/2016	Additional offset is a property (or part of a property) totalling 34 or more hectares of Carnaby's Black Cockatoo habitat purchased by WA DPaW on behalf of the approval holder, which will be maintained for conservation by WA DPaW .
As varied on the date this instrument was signed	Business day means a day that is not a Saturday, a Sunday or a public holiday in the state or territory of the action.
Original dated 18/7/2013	Clearing is defined as the cutting down, felling, thinning, logging, removing, killing, destroying, poisoning, ringbarking, uprooting or burning of native vegetation.
Original dated 18/7/2013	Commencement includes clearing and any preparatory works required to be undertaken including clearing vegetation, the erection of any fences, signage or on-site temporary structures and the use of construction or excavation equipment on site for the purpose of breaking the ground for buildings, infrastructure or resource extraction.
Original dated 18/7/2013	Construction includes any preparatory works required to be undertaken including clearing vegetation, the erection of any on-site temporary structures and the use of heavy duty equipment for the purpose of breaking the ground for buildings or infrastructure.
Original dated 18/7/2013	Department is the Australian Government Department administering the <i>Environment Protection and Biodiversity Conservation Act 1999</i> .
As varied on the date this instrument was signed	Environmental Offsets Policy means the Department's Environment Protection and Biodiversity Conservation Act 1999 Environmental Offsets Policy, October 2012
Original dated 18/7/2013	EPBC Act is the <i>Environment Protection and Biodiversity Conservation Act 1999</i> .
As varied on the date this instrument was signed	Further additional loss of habitat means the additional clearing of 2.56 ha of Carnaby's Black Cockatoo foraging habitat within areas shaded blue and areas shaded green at Attachment A1 (changed from 40.89 hectares to 43.45 hectares) enabled by the variation of condition 9 on the date this instrument was signed.
Variation dated 21/7/2014	Independent Revegetation Expert - Revoked
Original dated 18/7/2013	Minister is the minister administering the <i>Environment Protection and Biodiversity Conservation Act 1999</i> and includes a delegate of the Minister .
As varied on the date this instrument was signed	Legal securement means to execute a legal status or tenure of the offset site so as to provide enduring protection against it being used in a manner incompatible with the conservation of the habitat of matters protected under the EPBC Act which it contains.

Date of decision	Definitions attached to approval
As varied on the date this instrument was signed	New or increased impact means a new or increased environmental impact or risk relating to any protected matter , or a reduced overall environmental benefit from any restoration or offsetting works, when compared to the likely impact of implementing the action management plan that has been approved by the Minister under conditions 10 and 12, including any subsequent revisions approved by the Minister , as outlined in the <i>Guidance on 'New or Increased Impact' relating to changes to approved management plans under EPBC Act environmental approvals (2017)</i> .
Original dated 18/7/2013	Offset attributes must be in the form of an excel file ('.xls') capturing relevant attributes of the Offset Area, including the EPBC reference ID number, the physical address of the offset site, coordinates of the boundary points in decimal degrees, the EPBC protected matters that the offset compensates for, any additional EPBC protected matters that are benefiting from the offset, and the size of the offset in hectares.
Variation dated 21/7/2014	Offset property is the property that is no less than 635 ha in size (identified as the 'Carnaby's offset site at Attachment C) that will be purchased by the approval holder and will be maintained for conservation by the WA DPaW on behalf of the approval holder. The offset property is Lot 24 (on Deposited Plan 75789) on Mimegarra Road, 27 kilometres north-east of Lancelin, Western Australia.
As varied on the date this instrument was signed	Primary feeding plants - Revoked
Original dated 18/7/2013	Proposal site is Lot 9036 and Part Lot 3054 Marmion Avenue, shown as the 'site boundary' in Attachment A .
Original dated 18/7/2013	Revegetation is the removal of weeds and the long-term establishment of native vegetation.
Original dated 18/7/2013	Shapefile means an ESRI Shapefile containing '.shp', '.shx' and '.dbf' files and other files capturing attributes of the Offset Area, including the shape, EPBC reference ID number and EPBC protected matters present at the relevant site. Attributes should also be captured in '.xls' format.
Original dated 18/7/2013	Substantial commencement is when 1 hectare of land on the proposal site has been impacted by clearing or construction.
Variation dated 21/7/2014	WA DER - Revoked
Variation dated 21/7/2014	WA DPaW is the Western Australian Department of Parks and Wildlife (or equivalent agency).
As varied on the date this instrument was signed	WA DBCA means the Western Australian Department of Biodiversity, Conservation and Attractions (or successor agency)
As varied on the date this instrument was signed	Website means a set of related web pages located under a single domain name attributed to the approval holder and available to the public.

Date of decision

Attachment A

Variation dated 7/4/2016



Attachment A

Scale: 1:5,000 A4
Coordinate System: GDA 1984 MGA Zone 55
Note that positional errors may occur in some areas
Date: 10/20/16
Author: GMS
Source: Aerial Imagery: Esri/Mapbox 2011; ConceptDraw: 2016/2016

Legend

- Site boundary
- Subdivision layout

Potential foraging habitat for Carnaby's Black Cockatoo to be cleared (36.01 ha)

Potential foraging habitat for Carnaby's Black Cockatoo to be retained and cleared in POSHCIS (minimum total area retained 4.28 ha; maximum total area cleared 2.88 ha)



Date of decision

Attachment A1

As varied on the date this instrument was signed

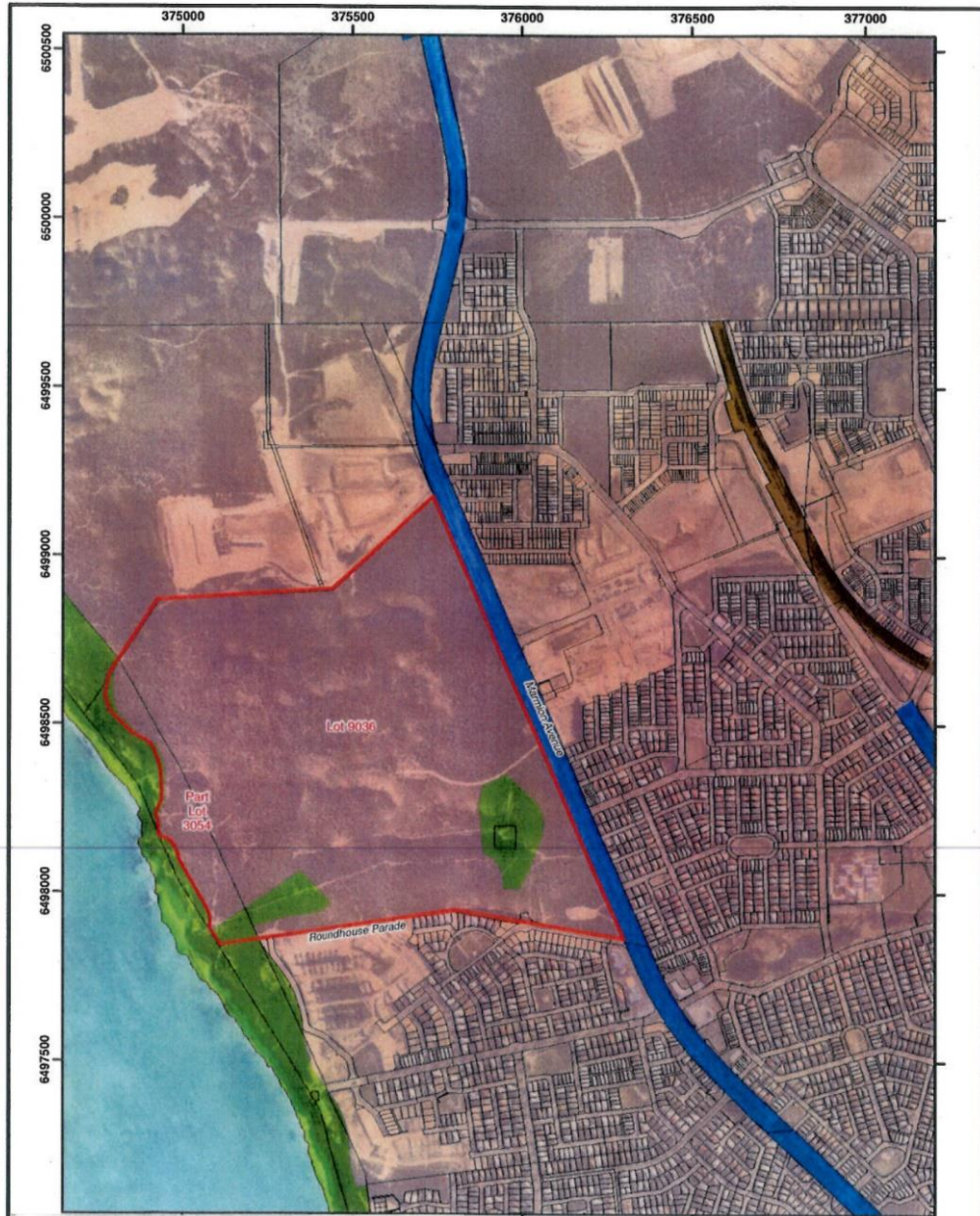


Legend: Site boundary Subdivision layout Potential foraging habitat for Carnaby's Black Cockatoo to be cleared (40.57 ha) Potential foraging habitat for Carnaby's Black Cockatoo to be retained and cleared in ROS (minimum total area retained 1.72 ha; maximum total area cleared 0.30ha)	Scale 1:10,000 at A4 	Jindee, WA REVISED ATTACHMENT A
	Coord. Sys. GDA 1994 MGA Zone 50 	Job No: 57481
	Client: Estates Development Company	FIGURE 1
	Version: A Date: 17-Dec-2019 Drawn By: nsullivan Checked By: RM	



Date of decision
Original dated
18/7/2013

Attachment B

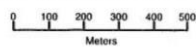


Attachment B



strategen.com.au
www.strategen.com.au

Coordinate System: GDA 1994 MGA Zone 58
Date: 19/10/2012
Author: J. Ivule



1:15,000
at A4

Source: Topography: Geoscience Australia 2004. MRS: IPI 2012.
Cadastral: Online SIB Database, Lancigale 09/2012.
Note that positional errors may occur in some areas

Legend

- Site boundary
- Metropolitan Region Scheme
- Urban
- Other Regional Roads
- Parks and Recreation
- Railways
- Waterways
- Cadastral boundaries



Date of decision

Attachment C

Variation dated 21/7/2014



Attachment C - Location of offset site (635 ha within Lot 24)

Scale 1:30,000 at A4
 0 150 300 450 600 750 m
 Coordinate System: GDA 1994 MGA Zone 50
 Note that positional errors may occur in some areas
 Date: 19/06/2014
 Author: JCrute
 Source: Aerial image: Landgate, flown 27/02/2012, downloaded 02/2013.

Legend
 Carnaby's offset site
 Lot 24 Mimegarra Road (1000 ha)



Path: Q:\Consult\2012\EDC\EDC12133.01\ArcMap_documents\LD15\EDC12133_01_L015_AttachmentC.mxd

Appendix B Conservation Management Plan Compliance Assessment

Table B.1: Conservation Management Plan (Revision 8) Audit Table

Reference	Condition	Timing	Evidence	Comment	Status
Section 3.1 Parks and Recreation Reserves					
CMP 01	Westminster will implement works funded to the order of \$393 000 (excluding GST), as agreed by the WAPC to implement all relevant management actions in the two Parks and Recreation Reserves (A and B), until the management of those areas is handed over to another party, which is mostly likely to be the WAPC.	During constructions	R02_65751 Jindee ACR 2024 (Rev 0)	Apart from fencing and fire breaks, management actions in the Parks and Recreation Reserves have not yet commenced and are not yet required. A land exchange was completed in 2016 which transferred the ownership of the Parks and Recreation Reserves to WAPC.	Compliant
CMP 02	The reserves will be handed over within 5 years of substantial commencement of the action, which will occur when land titles are created through the subdivision process administered by the WAPC.	Within 5 years of commencement date (by 4 February 2020) when land titles are created.	R02_65751 Jindee ACR 2024 (Rev 0)	As reported in the 2024 ACR (R02), this action was completed in a previous reporting period. A land exchange was completed in 2016 which transferred the ownership of the Parks and Recreation Reserves to WAPC. The certificate of titles for the Parks and Recreation Reserves, were issued in May 2016.	Compliant (complete)
CMP 03	The works to be undertaken by Westminster are outlined in Appendix 2, and will include: <ul style="list-style-type: none"> • Fire management; • Installation of appropriate barriers to prevent pedestrian access such as fencing and access gates to dunes; • Installation of public amenities (i.e., pathways and observation deck); and • Infill planting/seeding and weed control of areas to be revegetated as per the Clearing and Revegetation Management Plan and Table 3.1. 	During constructions	Refer to CMP 01	Apart from fencing to prevent unauthorized access and fire breaks around the whole site, works in the Parks and Recreation Reserves have not yet commenced and are not yet required.	Compliant

Table 3.1: Management Measures for the Parks and Recreation Reserves

CMP 04	Carnaby's Black-Cockatoo habitat being retained will be delineated by survey along clearing boundaries and protected by the installation of temporary fencing or survey pegs and flagging tape.	Prior to clearing	Site inspection 19/11/2024 P01_Retained Vegetation Flagging IMG_8467 P02_Retained Vegetation Flagging IMG_8468 P03_Temporary Fencing Retained CBC habitat IMG_8463 P12_Retained Vegetation Fencing IMG_6957	Flagging tape (P01, P02) was installed around the CBC habitat to be retained prior to clearing. Once a strip had been cleared along the flagging, temporary fencing (P03) was installed around the habitat to be retained prior to continuation of clearing.	Compliant
CMP 05	GPS co-ordinates of areas approved to be cleared and those required to be retained will be provided to the contractor to ensure no unapproved clearing is undertaken.	Prior to clearing	Site inspection 04/11/2024, 19/11/2024	The site works plan (made available to the auditor in the site office) was issued to Wormald to ensure they undertook clearing to the required specifications.	Compliant
CMP 06	Appropriate barriers to prevent pedestrian access such as fencing will be installed around the perimeter of the Parks and Recreation Reserves.	During construction	Site inspection 01/03/2024, 06/05/2024, 04/11/2024, 19/12/2024, 30/01/2025, 28/02/2028	The proposed Parks and Recreation Reserves are currently within vegetated areas within the greater construction area. The construction area is fenced preventing pedestrian access.	Compliant
CMP 07	Access point in the form of a single gate will be installed at strategic locations in the Parks and Recreation Reserves.	During construction	Not applicable	This action is not yet required. Parks and Recreation Reserves are currently within the greater construction area and not individually fenced or accessible to the public.	Not applicable

Reference	Condition	Timing	Evidence	Comment	Status
CMP 08	Stabilized gravel path and limestone bollards will be installed within the Parks and Recreation Reserve to ensure controlled public use.	During construction	Not applicable	This action is not yet required. Parks and Recreation Reserves are currently within the greater construction area and have not been established as Parks and Recreation Reserves.	Not applicable
CMP 09	Gravel fire access tracks will be constructed in accordance with the Fire Management Plan.	During construction	Refer to CMP 08	Refer to CMP 08	Not applicable
CMP 10	Firebreak creation, maintenance, removal of dead branches, and general fire prevention activities will be undertaken as recommended in the Fire Management Plan.	During construction	Site inspection 04/11/2024 R05_61568 R01 Jindee Release 5 subdivision BMP (Rev 0) R06_63519 M01 Jindee Release 5 subdivision BMP addendum (Rev 0) R07_65186 M01 Jindee Release 6 subdivision BMP addendum (Rev 0) R08_65414 M01 Jindee Release 12 subdivision BMP addendum (Rev 1) R09_68103 M01 Jindee subdivision renewal BMP addendum (Rev 0)_reduced R10_66609 R01 Jindee Release 5 BMP compliance (Rev 0)	Firebreaks were inspected during site inspection and found to be in place, maintained and free of dead branches as per the requirements of the City of Wanneroo Fire Mitigation Notice. The Bushfire Management Plan (BMP) (R05) and BMP Addendums (R06, R07, R08, R09) recommend fire prevention activities including: <ul style="list-style-type: none"> Standards for the construction of roads Standards for the construction of reticulated water supply Establishment of non-vegetated and low threat managed areas (i.e. development footprint, public roads, street verges, POS and low threat staging buffers) Compliance with the City of Wanneroo Fire Mitigation Notice Preparation of a BMP compliance report to demonstrate the relevant bushfire management measures have been implemented to deliver compliance in accordance with the BMP. BMP Compliance Report (R10) confirms compliance of Jindee Release 5 with BMP (R05) and BMP Addendum (R06).	Compliant

Reference	Condition	Timing	Evidence	Comment	Status
CMP 11	Determine appropriate method and timing of weed control in consultation with a suitably qualified specialist, based on monitoring results as described in the CRMP.	As per CRMP	JBS&G Ecology Advice (29/04/2024) E07_Jindee Weed Mapping October 2024 E05_Chemical Application Records October 2024 E08_Jindee Weed Mapping February 2025 E06_Chemical Application Records February 2025	JBS&G Ecology was consulted on the required method and timing of weed control. Advice received 29/04/2024 was that weed control was to occur Autumn/Winter, Spring and Summer with follow up inspections 4 weeks following a weed control event. No activity occurred in Autumn/Winter 2024. Monitoring and mapping (E07) were undertaken in October 2024 identifying the presence of: <ul style="list-style-type: none"> • 'Grasses' • <i>Agave americana</i> • <i>Arctotheca calendula</i> • <i>Brassica sp.</i> • <i>Euphorbia terracina</i> • <i>Gladiolus sp.</i> • <i>Medicago sp.</i> • <i>Pelargonium capitatum</i> • <i>Sonchus sp.</i> • <i>Tetragonia sp.</i> • <i>Trachyandra divaricate</i> Weed control was undertaken 15-17 October 2024 (E05). Monitoring and mapping (E08) were undertaken in February 2025 identifying the presence of: <ul style="list-style-type: none"> • 'Grasses' • <i>Agave americana</i> • <i>Pellargonium capitatum</i> • <i>Trachyandra divaricata</i> Weed control was undertaken 04-06 February 2025 (E06).	Compliant
CMP 12	Implement weed control	As determined by CMP 11 and CRMP	E05_Chemical Application Records October 2024 E06_Chemical Application Records February 2025	Workpower undertook weed control at Jindee on 15-17 October 2024 (E05) and 04-06 February 2025 (E06).	Compliant
CMP 13	Monitor weed control results and implement further control if required as described in the CRMP.	As per CRMP	M01_68056 ACR Evidence Request Response Rev 0	The Workpower weed monitoring and weed control program is planned to continue in 4 February 2025 and 3 February 2026 reporting period.	Compliant
CMP 14	All vehicles, machinery and equipment will be free of mud and soil.	Upon entry into Parks and Recreation areas.	E01_Jindee Release 12 Hygiene Register P15_Washdown Bay IMG_8939	All HV were cleaned down offsite prior to mobilisation to site (E01) including vehicles observed on site during the audit truck AD020 (washdown and inspected) and roller VR68 (washdown and inspected). LV are parked at site entrance unless required on site. LVs required on site are checked and if necessary, washed in the clean down bay (P15). No unauthorised vehicles or machinery entered the Parks and Recreation reserves during the reporting period.	Compliant
CMP 15	Engage a qualified and licensed subcontractor, if necessary to undertake pest fauna control/removal appropriate to the species detected, based on monitoring described in CMP.	On advice of qualified subcontractor	Refer to CMP 44	No monitoring was undertaken in 2022, 2023 or 2024. As such no pest control or removal to be contracted.	Not applicable

Reference	Condition	Timing	Evidence	Comment	Status
Table 3.2: Management Measures for Delineating Areas to be Retained					
CMP 16	Carnaby's Black-Cockatoo habitat being retained will be delineated by survey along clearing boundaries and protected by the installation of temporary fencing in areas adjacent to construction activity, or survey pegs and flagging tape where construction activity is not occurring.	Prior to clearing	Refer to CMP 04	Refer to CMP 04	Compliant
CMP 17	Temporary signage will be installed in accordance with the City of Wanneroo's standard signage policy to restrict construction workers from entering Carnaby's Black-Cockatoo habitat being retained.	Prior to clearing	Site inspection 30/01/2025, 28/02/2025 P04_Conservation Area Signage 1000005543 P05_Conservation Area Signage 1000005552	Temporary signage was in place (P04, P05) to restrict workers from entering CBC habitat being retained.	Compliant
CMP 18	GPS coordinates of areas approved to be cleared and those required to be retained will be provided to the contractor to ensure no unapproved clearing is undertaken.	Prior to clearing	Refer to CMP 05	Refer to CMP 05	Compliant
CMP 19	Appropriate barriers to prevent pedestrian access such as fencing 'will be installed around the perimeter of ROS areas or retained habitat within the City of Wanneroo's specifications designed to prevent public access.	During construction	Site inspection 01/03/2024, 06/05/2024, 04/11/2024, 19/12/2024, 30/01/2025, 28/02/2025	The proposed ROS are currently within vegetated areas within the greater construction area. The construction area is fenced preventing pedestrian access.	Compliant
CMP 20	Access points will be installed at strategic locations in the ROS areas to the City of Wanneroo's requirements.	During construction	Not applicable	This action is not yet required. ROS are currently within the greater construction area and not accessible.	Not applicable
CMP 21	Permanent signage will be installed to encourage public education and awareness on: <ul style="list-style-type: none"> The importance of retained bushland; The detrimental effects of rubbish, weeds and pathogens on biodiversity; The importance of keeping to the designated walking tracks; and The requirement for dogs to be on a lead in designated areas. 	During construction	R01_JBSG 2025 ACR (Rev 0)	Permanent signage was not yet required in the retained vegetation areas as there is no authorised access by the public during the reporting period and construction has not been completed on the areas of retained vegetation. OFI There is no signage on the Beach access track which could include: <ul style="list-style-type: none"> The importance of retained bushland; The detrimental effects of rubbish, weeds and pathogens on biodiversity; The importance of keeping to the designated walking tracks; and The requirement for dogs to be on a lead in designated areas. 	Not applicable

Table 3.3: Management Measures for Erosion and Dust Control Measures During Construction					
CMP 22	Cleared areas and any dry, dust-prone areas or stockpiles will be stabilized to prevent dust generation. Stabilization methods may include wetting (through use of water trucks), application of hydro-mulch, use of chemical polymers (if required) or other sealing material.	During construction	Site inspection 01/03/2024, 06/05/2024, 04/11/2024, 19/11/2024, 19/12/2024, 30/01/2025, 28/02/2025 P06_Water Cart IMG_6996 P11_Water Cart 1000005561 P09_Turkeys Nest IMG_6901 P07_Applied Hydromulch 1000005056 P08_Applied Hydromulch 1000005066	Water cart (P06, P11) and associated 'turkey nest' (P09) is in place, as well as the application of Hydromulch (P07, P08) over the summer period.	Compliant

Reference	Condition	Timing	Evidence	Comment	Status
CMP 23	Vehicle speeds will be restricted to 40 km per hour to minimize dust generation on designated roads, access tracks and within construction areas.	During construction	Site inspection 01/03/2024, 06/05/2024, 04/11/2024, 19/11/2024, 19/12/2024 P10_Front Entry Sign 1000005072	Signage at the access to the construction area shows speed limit restricted to 15 km per hour (P10).	Compliant

Table 3.4: Weed Management Measures

CMP 24	Identify weeds occurring in retained habitat in ROS areas.	Annual as soon as vegetation clearing commences adjacent to the ROS areas	E07_Jindee Weed Mapping October 2024 E08_Jindee Weed Mapping February 2025	Workpower identified weeds prior to undertaking weed control in October 2024 (E07) and February 2025 (E08).	Compliant
CMP 25	Determine appropriate method and timing of weed control in and adjacent to ROS areas in consultation with a suitably qualified specialist.	Annual as soon as vegetation clearing commences adjacent to the ROS areas	Refer to CMP 11	Refer to CMP 11	Compliant
CMP 26	Implement weed control.	Annual as soon as vegetation clearing commences adjacent to the ROS areas	E05_Chemical Application Records October 2024 E06_Chemical Application Records February 2025	Workpower undertook weed control at Jindee on 15-17 October 2024 (E05) and 04-06 February 2025 (E06).	Compliant
CMP 27	Monitor weed control results and implement further control if required, on the advice of the City of Wanneroo (e.g., bushland management personnel) or suitably qualified specialist, etc.	Annual as soon as vegetation clearing commences adjacent to the ROS areas	M01_68056 ACR Evidence Request Response Rev 0	The Workpower weed monitoring and weed control program is planned to continue in 4 February 2025 and 3 February 2026 reporting period.	Compliant

Table 3.5: Pathogen Management Measures

CMP 28	All construction personnel will be inducted in relation to dieback risk, potential impacts, and management.	During construction	E03_Induction PowerPoint Rev 0 E09_Personnel Onsite 20250228 E10_CBC Induction Register	Slide 6 of the CBC Induction (E03) states that: <ul style="list-style-type: none"> Dieback spreads through the movement of soil and water, especially footwear and vehicles. Dieback is caused by the plant pathogen <i>Phytophthora cinnamomi</i> and attacks the root system of susceptible plants, many which are used by CBCs. To mitigate the risk of Dieback all vehicles, machinery and equipment (used for works) are to be free of mud and soil when entering site Personnel register onsite by QR code daily. All personnel are required to have undertaken the general induction when they register. The auditor cross referenced the list of personnel on site (E09) with the CBC Induction Register (E10). All personnel on site on 28/02/2025 had completed the CBC Induction (E03).	Compliant
CMP 29	All vehicles, machinery and equipment will be free of mud and soil.	Upon arrival/entry into POS/ROS site(s)	Refer to CMP 14	Refer to CMP 14	Compliant

Table 3.6: Fire Management Measures

Reference	Condition	Timing	Evidence	Comment	Status
CMP 30	A Fire Management Plan will be prepared as required in accordance with the City of Wanneroo's standard operating procedures.	Pre-construction	R05_61568 R01 Jindee Release 5 subdivision BMP (Rev 0) R06_63519 M01 Jindee Release 5 subdivision BMP addendum (Rev 0) R07_65186 M01 Jindee Release 6 subdivision BMP addendum (Rev 0) R08_65414 M01 Jindee Release 12 subdivision BMP addendum (Rev 1) R09_68103 M01 Jindee subdivision renewal BMP addendum (Rev 0)_reduced R10_66609 R01 Jindee Release 5 BMP compliance (Rev 0)	The following fire management plans have been prepared and approved by the City of Wanneroo: <ul style="list-style-type: none"> Release 5 Jindee Estate Bushfire Management Plan (22/09/2021) (R05) Bushfire Management Plan Addendum: Jindee Estate Release 5 subdivision, Jindalee (02/09/2022) (R06) Bushfire Management Plan Addendum: Jindee Estate Release 6 subdivision, Jindalee (28/07/2023) (R07) Bushfire Management Plan Addendum: Jindee Estate Release 6 subdivision, Jindalee (05/04/2024) (R08) Bushfire Management Plan Addendum: Jindee Subdivision Renewal (06/12/2024) (R09) BMP Compliance Report (R10) confirms compliance of Jindee Release 5 with BMP (R05) and BMP Addendum (R06).	Compliant
CMP 31	Firebreak creation, maintenance, removal of dead branches, and general fire prevention activities will be undertaken as recommended in the Fire Management Plan.	Ongoing	Refer to CMP 10	Refer to CMP 10	Compliant
CMP 32	A reticulated water supply will be extended throughout the subdivision area to all proposed lots.	During construction	M02_68056 Wormall Site Inspection 20250228 Evidence	Management advised that a reticulated water supply and hydrants were supplied to all lots in released subdivision stages.	Compliant

Table 3.7: Introduced Fauna Control Measures

CMP 33	Engage a qualified and licensed subcontractor to undertake pest fauna control/removal appropriate to the species detected, based on monitoring results	On advice of qualified subcontractor	Refer to CMP 15	Refer to CMP 15	Not applicable
CMP 34	Provide community education signage around conservation areas detailing the potential risk domestic cats and dogs may pose to native flora and fauna within the Estate.	To be placed postconstruction	Refer to CMP 21	Refer to CMP 21	Not applicable

Reference	Condition	Timing	Evidence	Comment	Status
Table 4.1 Monitoring Actions – Parks & Recreation ROS Spaces					
<i>Delineation of habitat to be retained</i>					
CMP 35	Monitor the condition of infrastructure delineating Carnaby’s Black-Cockatoo habitat (e.g., fencing, gates, pathways, signage, etc.) to ensure infrastructure is in good condition and that there has been no unauthorized clearing beyond the barrier Location: retained near clearing boundaries.	Quarterly during construction	Site inspection 01/03/2024, 06/05/2024, 04/11/2024, 19/11/2024, 19/12/2024, 30/01/2025, 28/02/2025 P03_Temporary Fencing Retained CBC habitat IMG_8463 P13_ROS Boundary Flagging 1000005539 P14_ROS Boundary Flagging 1000005541 P12_Retained Vegetation Fencing IMG_6957 E11_Weekly Inspection 08-01-2025-1893-Jindee-Project E12_Weekly Inspection 04-02-2025-1893-Jindee-Project E13_Weekly Inspection 24-02-2025-1893-Jindee-Project	Monitoring (to ensure no clearing beyond the barriers) is undertaken by Wormald site personnel (when construction was being undertaken on site) on a weekly basis (E11, E12, E13). Site inspections by the auditors confirmed that fencing/flagging (P03, P13, P14) around retained vegetation was in good condition and there had been no unauthorised clearing beyond the barriers.	Compliant
<i>Erosion and dust control for retained habitat</i>					
CMP 36	Undertake visual observations of dust generation and erosion to minimize erosion and dust impacts from construction on retained habitat. Location: unsealed surfaces prone to dust generation (e.g., roads, stockpiles, etc.).	Opportunistically during construction	Site inspection 01/03/2024, 06/05/2024, 19/11/2024, 19/12/2024, 30/01/2025, 28/02/2025 P06_Water Cart IMG_6996 P11_Water Cart 1000005561	Visual observations are made and utilised for the implementation of water carts (P06, P11). No excessive dust levels were observed.	Compliant
CMP 37	Monitor dust suppression equipment / actions to minimize erosion and dust impacts from construction on retained habitat. Location: where potential dust generation is taking place.	Opportunistically during construction	Site inspection 01/03/2024, 06/05/2024, 19/11/2024, 19/12/2024, 30/01/2025, 28/02/2025 P06_Water Cart IMG_6996 P11_Water Cart 1000005561 P07_Applied Hydromulch 1000005056 P08_Applied Hydromulch 1000005066	The contractor is monitoring dust levels continuously. Dust suppression in the form of a continuously operating water cart (P06, P11) and ad hoc application of hydromulch (P07, P08) is used to manage dust levels to ALARP.	Compliant
CMP 38	Undertake visual observation of vegetation health, including dust smothering and erosion to minimize erosion and dust impacts from construction on retained habitat Location: retained Carnaby’s Black-Cockatoo habitat beyond clearing boundaries.	Opportunistically during construction	Site inspection 01/03/2024, 06/05/2024, 04/11/2024, 19/11/2024, 19/12/2024, 30/01/2025, 28/02/2025 P03_Temporary Fencing Retained CBC habitat IMG_8463 P13_ROS Boundary Flagging 1000005539	No evidence of dust smothering or erosion in the retained Carnaby’s Black-Cockatoo habitat beyond clearing boundaries (P03, P13) was observed by the auditor during site inspections.	Compliant

Reference	Condition	Timing	Evidence	Comment	Status
<i>Pathogen management for retained habitat</i>					
CMP 39	Conduct inspections of machinery for construction works to ensure appropriate dieback hygiene are being undertaken. Location: at the authorized access points into the site.	Upon initial entry and opportunistically during construction.	Refer to CMP 14	Refer to CMP 14	Compliant
<i>Feral animal control for retained habitat</i>					
CMP 40	Monitor the presence of introduced animals (foxes, rabbits, and/or feral cats) to determine their presence within the retained habitat, and whether fauna control is required. Location: within retained Carnaby's Black-Cockatoo habitat in ROS until handover By: Westminster	Annually in Spring and opportunistically until handover		Northern portion of CBC habitat within the eastern ROS area is being retained and is delineated along the clearing boundary by pegs and flagging tape. There was no monitoring of introduced animals undertaken in this area in the reporting period.	Potentially non-compliant
<i>Carnaby's Cockatoo opportunistic monitoring</i>					
CMP 41	Monitor the presence of Carnaby's Black-Cockatoo (as indicated by sightings, evidence of foraging, etc.) to determine presence of Carnaby's Black-Cockatoo within the retained habitat. Location: retained Carnaby's Cockatoo habitat in ROS areas, and in revegetation areas.	Opportunistically until handover.	Site inspection 01/03/2024, 06/05/2024, 04/11/2024, 19/11/2024, 19/12/2024, 30/01/2025, 28/02/2025 M02_68056 Wormall Site Inspection 20250228 Evidence	There were no opportunistic sightings of Carnaby's Black-Cockatoo during site inspections and construction personnel report that it is rare to see a Carnaby's Black-Cockatoo when working on site.	Not Applicable

Table 5.1: Performance indicators and corrective actions

CMP 42	Access / delineation of areas that will be retained. If there is unrestricted or unauthorized access: <ul style="list-style-type: none"> Determine how access was gained and, if possible, the likely time of access. Implement remedy, which could include: <ul style="list-style-type: none"> repair fence/s erect signs to highlight prohibited access. Monitor success of control. Performance Indicator: Areas of retained habitat delineated	If there is unrestricted or unauthorized access	Refer to CMP 35	There was no reported unrestricted or unauthorized access.	Not Applicable
CMP 43	Erosion and dust. If excessive dust levels are observed: <ul style="list-style-type: none"> Investigate cause. Implement additional dust control measures as appropriate. Continue monitoring (visual observations) to determine success of implemented management actions. Performance Indicator: cleared areas and any dry, dustprone areas or stockpiles stabilized	If excessive dust levels are observed	Refer to CMP 36	Excessive dust levels were not observed. The water cart was used on an ongoing basis and during the holiday period, hydromulch was applied.	Not Applicable

Reference	Condition	Timing	Evidence	Comment	Status
CMP 44	<p>Feral animals</p> <p>If there are pest/other grazing animal (primarily rabbits) encounters within retained habitat:</p> <ul style="list-style-type: none"> Investigate cause. Undertake intervention or remediation works (including moving bins, implementing a feral animal trapping and baiting program). Monitor success <p>Performance Indicator: No encounters with Pest/other grazing animal encounters within POS/civic areas</p>	If there are pest/other grazing animals	Site inspection 01/03/2024, 06/05/2024, 04/11/2024, 19/11/2024, 19/12/2024, 30/01/2025, 28/02/2025 M02_68056 Wormall Site Inspection 20250228 Evidence	There were no reported encounters with pest or other grazing animals in the reporting period.	Not Applicable

Table 6.1: Long-term Management and Timeframes for Implementation

CMP 45	Retained habitat in Parks and Recreation Reserves will be managed by Estates Development Company via Westminster Estates Pty Ltd until completion of construction.	Until completion of construction adjacent to the reserves and completion of CRMP commitments; and	R01_JBSG 2025 ACR Appendix B	The Parks and Recreation Reserves are currently within the block of vegetation on the southern portion of the development and have not been delineated as part of construction. Westminster Estates are currently implementing the CMP to manage the relevant management actions applicable to the undefined Parks and Recreation Reserves.	Compliant
CMP 46	Formal transfer of management responsibility to CoW (in the form a of a revestment order over the lot) will be the responsibility of WAPC (refer to Section 6.2). WAPC will initiate the revestment order once Westminster Estate has completed the works required under 10 (g) of the EPBC approval.	WAPC will initiate the re-vestment order once Estates Development Company via Westminster Estates Pty Ltd has completed the works required under 10(g) of the EPBC approval.	R01_JBSG 2025 ACR Appendix B	Westminster Estate has not completed the works required under 10 (g) of the EPBC approval (fully implement the CMP).	Not Applicable

Appendix C Clearing and Revegetation Management Plan Compliance Assessment

Table C.2: Clearing and Revegetation Management Plan (Revision 7) reporting Table

Reference	Condition	Timing	Evidence	Comment	Status
Section 3.2: Detailed Protocols for the Collection and Use of Native Seed					
CRMP 01	There is approximately 0.75 ha of degraded habitat that has been identified within the Proposal site. Some of these degraded areas are not proposed to be revegetated as they are proposed to be used in the creation of formal pedestrian pathways (up to 3 m wide) and associated recreational infrastructure (such as an observation deck and seating).	Revegetation	R02_65751 Jindee ACR 2024 (Rev 0)	As reported in the 2024 ACR (R02), base plans for revegetation areas in Parks and Recreation Area A and B have been prepared and conform to Figure 3 of CRMP. Commencement of landscaping (i.e. installation of pathways and recreation infrastructure) within Parks and Recreation Reserves has not yet commenced.	Not Applicable
CRMP 02	Placement of primary feeding trees and shrubs will occur within the two Parks and Recreation Areas and other areas may include POS/civic spaces and streetscapes.	Revegetation	R02_65751 Jindee ACR 2024 (Rev 0)	Revegetation and landscaping has not yet commenced in Parks and Recreation Areas. There were no POS or streetscapes created during the reporting period.	Not Applicable
Table 3.1: Detailed Protocols for the Collection and Use of Native Seed					
<i>Seed collection and transport</i>					
CRMP 03	The Proponent will seek quotations and engage contractor licensed by DPaW to collect seed from areas of Carnaby's Cockatoo habitat to be cleared when Carnaby's Cockatoo foraging species are seeding based on advice from seed collectors.	Pre-construction	R02_65751 Jindee ACR 2024 (Rev 0)	As reported in the 2024 ACR (R02), Tranen provided a quote for seed collection, processing and storage and was subsequently engaged to undertake the quoted tasks in a previous reporting period.	Complete
CRMP 04	The Proponent will undertake seed collection in designated areas of Carnaby's Black-Cockatoo habitat proposed to be cleared.	Pre-construction	R02_65751 Jindee ACR 2024 (Rev 0)	As reported in the 2024 ACR (R02), correspondence from Tranen confirmed that seed was collected in the Carnaby's Cockatoo habitat to be cleared. Seed Bank Statement verifies the seed collected and collection date (December to March 2014). Based on this, no more seed is needed to be collected.	Complete
CRMP 05	The Proponent will ensure seed for on-site revegetation plus any off-site use is stored and transported in accordance with Revegetation Industry of Western Australia (RIAWA) standards to ensure seed viability.	Pre/during construction	R02_65751 Jindee ACR 2024 (Rev 0) C06_Confirmation of Seed Storage	Tranen confirmed that seed continues to be stored in the seed bank (C06). As reported in the 2024 ACR (R02), the quote for seed collection services from Tranen and company brochure states that all seed services are compliant with RIAWA guidelines.	Compliant
CRMP 06	The Proponent will monitor native seed and maintain a register of volumes, species collected, locations and quantities.	Pre-construction	E04_Jindee Estates Seed Bank - Stock Available	Seed Bank Statement dated 16/11/2016 (E04). No seed treatments were applied or testing undertaken in the reporting period.	Compliant
CRMP 07	Any native seed that cannot be utilised in the Project Area will be provided to DPaW or other receiving party (or parties).	During construction	M01_68056 ACR Evidence Request Response Rev 0	Seeds have not yet been utilised and are in storage. Revegetation has not commenced.	Compliant
<i>Site preparation and maintenance for onsite revegetation</i>					
CRMP 08	The Proponent will select on-site reference sites containing landforms and vegetation comparable (or likely to have been comparable) to those areas proposed to be revegetated.	Pre/during construction	M01_68056 ACR Evidence Request Response Rev 0	Revegetation did not commence during this reporting period, as such, selection of reference sites was not required during this reporting period.	Not Applicable
CRMP 09	The Proponent will survey the onsite reference sites to determine indicator species, density of native species, percent cover of native species, native species richness and percent weed cover.	Pre/during construction	Refer to CRMP 08	Refer to CRMP 08	Not Applicable
CRMP 10	The Proponent will determine success criteria for revegetation sites based on the survey of the reference sites.	During construction	Refer to CRMP 08	Refer to CRMP 08	Not Applicable
CRMP 11	The Proponent will provide temporary barriers to prevent pedestrian access; such as fencing, and signage around degraded areas identified for revegetation.	During construction	Refer to CRMP 08	Refer to CRMP 08	Not Applicable
CRMP 12	The Proponent will undertake weed control as required at the revegetation site until targets are achieved.	During construction	Refer to CRMP 08	Refer to CRMP 08	Not Applicable

Reference	Condition	Timing	Evidence	Comment	Status
CRMP 13	Primary feeding plants for the Carnaby's Black-Cockatoo will not be planted by the Proponent along roads with speed limits exceeding 50 km per hour (to minimise the risk to Carnaby's Black-Cockatoo).	During construction	M01_68056 ACR Evidence Request Response Rev 0	No streetscapes were planted in the reporting period.	Not Applicable
<i>Broadcast seeding for onsite revegetation</i>					
CRMP 14	The Proponent will determine the quantity of seed of various native flora species required for broadcasting within on-site revegetation areas.	During construction	Refer to CRMP 04	Seed collection was completed during a previous reporting period. Refer to CRMP 04.	Complete
CRMP 15	Prior to direct seeding, seed should undergo the appropriate treatments required to break dormancy and improve germination rates. The treatments could include smoking, freezing, boiling or scarifying.	During construction	M01_68056 ACR Evidence Request Response Rev 0	Direct seeding did not commence during the reporting period.	Not Applicable
CRMP 16	The Proponent will undertake seed viability and germination testing if deemed necessary.	During construction	Refer to CRMP 15	Refer to CRMP 15	Not Applicable
CRMP 17	After achieving required weed control, area should be raked (scarified) in preparation for direct seeding.	During construction	Refer to CRMP 15	Refer to CRMP 15	Not Applicable
CRMP 18	The treated seed should be combined with an appropriate medium (e.g., yellow sand, vermiculite, etc.) and manually distributed (i.e., broadcast by hand) by an experienced operator, ensuring an even coverage over the whole area.	During construction	Refer to CRMP 15	Refer to CRMP 15	Not Applicable
<i>Plant propagation for onsite revegetation</i>					
CRMP 19	Determine the quantity of various flora species required to be propagated for on-site revegetation annually.	Pre-construction	R02_65751 Jindee ACR 2024 (Rev 0)	Revegetation did not commence during the reporting period; therefore, the propagation of seedlings was not required. Tranen have previously advised that the quantity of seed collected is sufficient for revegetation purposes.	Not Applicable
CRMP 20	Engage a nursery to propagate seedlings (if seedlings are included as part of the annual revegetation program).	During construction	Refer to CRMP 19	Refer to CRMP 19	Not Applicable
CRMP 21	For on-site revegetation produce propagated plants from local provenance seed in an accredited nursery.	During construction	Refer to CRMP 19	Refer to CRMP 19	Not Applicable
CRMP 22	Ensure the quantities of plants are available for pick-up or delivery to the contractor.	During construction	Refer to CRMP 19	Refer to CRMP 19	Not Applicable
CRMP 23	Determine appropriateness of additives, which could include Seasol (or equivalent), water granules, soil breaker, water retainer, wetting agent or fertiliser tablets. If required, they will be added at the relevant time (i.e., in the hole prior to planting or upon watering-in plants).	During construction	Refer to CRMP 08	Refer to CRMP 08	Not Applicable
CRMP 24	Place plants in a hole that is approximately twice the size of the plant pot, ensuring the base of the plant is slightly below the original soil surface.	During construction	Refer to CRMP 08	Refer to CRMP 08	Not Applicable
CRMP 25	The Proponent will fill soil around the plant ensuring it sits in a basin that is approximately 200 to 300 mm in diameter and 50 mm deep to provide adequate water capture. The base of the plant will be flush with the soil surface within the basin to prevent collar rot.	During construction	Refer to CRMP 08	Refer to CRMP 08	Not Applicable
CRMP 26	The Proponent will water seedlings when planted as required.	During construction	Refer to CRMP 08	Refer to CRMP 08	Not Applicable
CRMP 27	The Proponent will install stakes (10 to 12 mm diameter) and a protective guard (plastic) around the seedlings to protect the seedlings from rabbits.	During construction	Refer to CRMP 08	Refer to CRMP 08	Not Applicable

Reference	Condition	Timing	Evidence	Comment	Status
Table 4.1: Targets and Indicators					
CRMP 28	The Proponent will utilise suitable native seed collected from within Carnaby's Black-Cockatoo habitat proposed to be cleared in revegetation projects (including on-site degraded areas). Key Performance Indicator Proportion of native seed collected used on-site or transferred to receiving party as per seed register.	Revegetation	Refer to CRMP 08	Refer to CRMP 08	Not Applicable
CRMP 29	The Proponent will revegetate 0.38 ha of degraded land so that native species richness and/or density are within 80% of the native species richness and/or density recorded in reference quadrats. Key Performance Indicator Comparison of vegetation community type and weeds within the degraded areas proposed to be revegetated with that recorded in the survey of the reference site.	Revegetation	Refer to CRMP 08	Refer to CRMP 08	Not Applicable
CRMP 30	The Proponent will manage weeds in 0.38 ha of degraded land proposed to be revegetated so that weed species density and/or cover are not greater than 10% of the weed species density and/or cover recorded in reference quadrats, and to ensure that there is no addition of new weed species compared to the on-site reference site. Key Performance Indicator Comparison weeds density/species and cover within the degraded areas proposed to be revegetated with that recorded in the survey of the reference site.	Overall	Refer to CRMP 08	Refer to CRMP 08	Not Applicable
Table 4.2: Monitoring Program					
<i>Seed Collection and Use</i>					
CRMP 31	The Proponent will monitor the proportion of native seed collected, used on-site and transferred to receiving party to ensure native seed collected from within Carnaby's Black-Cockatoo habitat is used for revegetation.	Annually by 30 June during construction until the suitable native seed utilised on-site or transferred	Refer to CRMP 04	Refer to CRMP 04	Not Applicable
<i>On-site Revegetation</i>					
CRMP 32	The Proponent will monitor the integrity of temporary fencing to ensure no inadvertent clearing of areas to be retained.	Daily during construction as part of construction area inspections	Refer to CRMP 08	Revegetation planting did not commence during the reporting period.	Not Applicable
CRMP 33	The Proponent will monitor plant density, species richness, weed species density and weed species richness to determine success of rehabilitation. Monitoring will be undertaken via quadrats in on-site revegetated areas.	Annually after planting/direct seeding (September to October) until achievement of performance targets.	Refer to CRMP 08 and CRMP 18	Revegetation planting and direct seeding did not commence during the reporting period.	Not applicable
CRMP 34	The Proponent will record the number of suitable Carnaby's Black-Cockatoo foraging species in on-site planting to monitor the abundance of species suitable for future use of Carnaby's Black-Cockatoo for food.	Annually after planting/direct seeding (September to October) until achievement of performance targets.	Refer to CRMP 08 and CRMP 18	Revegetation planting and direct seeding did not commence during the reporting period.	Not applicable
CRMP 35	Monitor the presence of feral animals to ensure there are no feral animals present within the on-site revegetated areas. Location: On-site revegetated areas.	Annually after planting/direct seeding (September to October) until achievement of performance targets.	Refer to CRMP 08 and CRMP 18	Revegetation planting and direct seeding did not commence during the reporting period.	Not applicable

Reference	Condition	Timing	Evidence	Comment	Status
Table 5.1: Contingency Actions					
CRMP 36	If inappropriate species have been used in onsite revegetation areas to meet onsite revegetation targets determined in Table 4.1, the approval holder must: <ol style="list-style-type: none"> 1. Identify cause. 2. Remove inappropriate species and replace (if required) with appropriate species. 3. Ensure inappropriate species are not used in future. 	Where trigger is met	Not applicable	Trigger has not been met.	Not applicable
CRMP 37	If insufficient quantity or quality of local provenance seed is available to fulfil the requirements of the CRMP to meet onsite revegetation targets determined in Table 4.1, the approval holder must: <ol style="list-style-type: none"> 1. Identify alternative source of seed for revegetation species. 2. Seed will be sourced from a collection location which is as close as possible to the project site, and within the Swan Coastal Plain, if seed is available. 3. Broader provenances (outside the Swan Coastal Plain) will be considered as a last option if no other suitable alternatives are available. 	Where trigger is met	Not applicable	Trigger has not been met.	Not applicable
CRMP 38	If inadequate native flora species richness and/or cover to achieve revegetation targets determined in Table 4.1 by vegetation monitoring, the approval holder must: <ol style="list-style-type: none"> 1. Identify cause. 2. Implement approach to remedy cause, which could include: <ul style="list-style-type: none"> • collecting additional provenance seed for direct seeding or plant propagation to compensate for the insufficient native plant species richness and/or cover • undertake infill seedling planting and direct seeding • application of fertilisers or wetting agents etc, as approved by DPaW. 3. Monitor success of remedy. 	Where trigger is met	Not applicable	Trigger has not been met.	Not applicable
CRMP 39	If unacceptable weed infestations in on-site revegetated sites as determined in Table 4.1 by based on a 10% increase in weed density and cover or the addition of new weed species compared to the on-site reference site* during vegetation monitoring, the approval holder must: <ol style="list-style-type: none"> 1. Investigate cause (e.g. adjacent sources of weed seed). 2. Implement measures to prevent further weed infestations (e.g. screening fencing, weed control in adjacent land), as practicable. 3. Undertake weed control activities as required. 	Where trigger is met	Not applicable	Trigger has not been met.	Not applicable
CRMP 40	If feral animals are noted within revegetated areas, the approval holder must: <ol style="list-style-type: none"> 1. Investigate cause (e.g. breach in fencing or other barrier). 2. Implement measures to prevent further feral animal intrusions, as practicable. 3. Engage a qualified and licensed subcontractor, if necessary to undertake pest fauna control/removal appropriate to the species detected. 	Where trigger is met	Not applicable	Trigger has not been met.	Not applicable
Table 6.1: Long-term Management and Timeframes for Implementation					
CRMP 41	The CRMP will be implemented by Westminster until the performance targets outlined in Table 4.1 are achieved to the satisfaction of the City of Wanneroo	Until the performance targets are achieved, and areas have been handed over	M01_68056 ACR Evidence Request Response Rev 0	Most of the revegetation requirements in the CRMP did not commence during the reporting period.	Not applicable

Reference	Condition	Timing	Evidence	Comment	Status
CRMP 42	Formal transfer of management responsibility to CoW (in the form of a re-vestment order over the lot) will be the responsibility of WAPC. WAPC will initiate the re-vestment order once Westminster has completed the works required under 10 (g) of the EPBC approval	Once Westminster has completed the works required under 10 (g) of the EPBC approval	M01_68056 ACR Evidence Request Response Rev 0 R02_65751 Jindee ACR 2024 (Rev 0)	Parks and Recreation Reserves have been accordingly zoned under the MRS. A land exchange was completed in 2016 which transferred the ownership of the Parks and Recreation Reserves to WAPC. Works required under condition 10(g) have not yet commenced. Works are outlined in Appendix 2 of CMP.	Not applicable

Appendix D Evidence Register

Table D.3: Evidence Register

Code	Reference	Author	Electronic	Hard-copy	Evidence
C01	C01_2012-6631 Westminster Jindee show cause April 2024	DCCEEW	X		Letter 04/04/2024 from DCCEEW regarding potential breach of approval conditions attached to EPBC 2012/6631 requesting Estates Development Company provide evidence that Condition 14 and Condition 15 had been met.
C02	C02_Notice of EPBC Act Approval 2013_6631 2024 Annual Compliance Report for Jindee Innovation Project	JBS&G	X		Email 06/05/2024 submission to DCCEEW of 2024 ACR (R02) including website link.
C03	C03_Confirmation of Jindee current CMP and CRMP versions	JBS&G	X		Email 11/02/2025 confirmation that CMP Rev 8 (R04) and CRMP Rev 7 (R03) are the current revisions of the management plans.
C04	C04_Westminster Response to DCCEEW Show Cause Letter	EDC	X		Letter 02/05/2024 from EDC to DCCEEW in response to potential breach of approval conditions attached to EPBC 2012/6631 providing details to show compliance with Condition 14 and Condition 15.
C05	C05_DAWE_Jindee CMP CRMP approval letter_17022021	DAWE	X		Letter 17/02/2021 from DAWE approving the the Conservation Management Plan (Rev 8) 9 December 2020 (R04) and the Clearing and Revegetation Management Plan (Rev 7) 9 December 2020 (R03).
E01	E01_Jindee Release 12 Hygiene Register	Wormall	X		Wormall Civil Earthmoving / Equipment Hygiene Register Jindee Release 12.
E02	E02_Website Screenshot 2025-02-11	EDC	X		Website screenshot taken 11/02/2025 from Jindee website: https://www.jindee.com.au/documents/epbc/ Confirming successful weblinks to the following documents: <ul style="list-style-type: none"> • EPBC ACRs 2017, 2018, 2019, 2020, 2021, 2022, 2023, 2024 (R02) • CRMP (R03)

Code	Reference	Author	Electronic	Hard-copy	Evidence
					<ul style="list-style-type: none"> CMP (R04)
E03	E03_Induction PowerPoint Rev 0	Wormall	X		Wormall Civil Jindee Stage 12 Induction: Conservation Management Plan
E04	E04_Jindee Estates Seed Bank - Stock Available	Tranan	X		Seed Tracker Seed Bank Statement – Stock Remaining By Batch Jindee Estates (Wednesday 16 November 2026).
E05	E05_Chemical Application Records October 2024	Workpower	X		Chemical Application Records for October 2024: <ul style="list-style-type: none"> 15/10/2024 16/10/2024 17/10/2024
E06	E06_Chemical Application Records February 2025	Workpower	X		Chemical Application Records for February 2025: <ul style="list-style-type: none"> 04/02/2025 05/02/2025 06/02/2025
E07	E07_Jindee Weed Mapping October 2024	Workpower	X		Jindee Weed Mapping October 2024: <ul style="list-style-type: none"> Overall ROS East ROS West
E08	E08_Jindee Weed Mapping February 2025	Workpower	X		Jindee Weed Mapping February 2025: <ul style="list-style-type: none"> Overall ROS North (East) ROS South (West)
E09	E09_Personnel Onsite 20250228	Wormall	X		Screenshots from personnel on site database 28/02/2025.
E10	E10_CBC Induction Register	Wormall	X		Wormall Civil Site Conservation Management Plan Induction Sign On Jindee Release 12 (12/11/2024 to 28/01/2025)
E11	E11_Weekly Inspection 08-01-2025-1893-Jindee-Project	Wormall	X		Wormall Civil (OF-005) WHSEQ – Checklist and Review Jindee Project Inspection 08/01/2025.

Code	Reference	Author	Electronic	Hard-copy	Evidence
E12	E12_Weekly Inspection 04-02-2025-1893-Jindee-Project	Wormall	X		Wormall Civil (OF-005) WHSEQ – Checklist and Review Jindee Project Inspection 04/02/2025.
E13	E13_Weekly Inspection 24-02-2025-1893-Jindee-Project	Wormall	X		Wormall Civil (OF-005) WHSEQ – Checklist and Review Jindee Project Inspection 24/02/2025.
G01	G01_68056_Jindee_A4L_01_R01 Clearing Figure	JBS&G	X		GIS Nearmaps comparison clearing compliance assessment for EPBC 2012/6631 (reporting period 05/02/2024 to 04/02/2025)
M01	M01_68056 ACR Evidence Request Response Rev 0	JBS&G	X		JBS&G project support response 31/03/2025 to request for evidence to undertake compliance assessment for ACR.
M02	M02_68056 Wormall Site Inspection 20250228 Evidence	Wormall	X		Wormall evidence response 28/02/2025.
P01	P01_Retained Vegetation Flagging IMG_8467	JBS&G	X		Photo of flagging around vegetation during clearing activities.
P02	P02_Retained Vegetation Flagging IMG_8468	JBS&G	X		Photo of retained vegetation flagging with temporary construction fencing being installed.
P03	P03_Temporary Fencing Retained CBC habitat IMG_8463	JBS&G	X		Photo of temporary construction fencing around retained CBC habitat.
P04	P04_Conservation Area Signage 1000005543	JBS&G	X		Photo of conservation area (keep out) signage on temporary construction fencing.
P05	P05_Conservation Area Signage 1000005552	JBS&G	X		Photo of earthworks with retained vegetation in background including temporary construction fencing with conservation area (keep out) signage.
P06	P06_Water Cart IMG_6996	JBS&G	X		Photo of the water cart administering dust suppression on the access track.
P07	P07_Applied Hydromulch 1000005056	JBS&G	X		Photo of hydromulch applied on unvegetated area of the development.
P08	P08_Applied Hydromulch 1000005066	JBS&G	X		Photo of hydromulch applied on unvegetated area of the development.
P09	P09_Turkeys Nest IMG_6901	JBS&G	X		Photo of the Turkeys Nest.

Code	Reference	Author	Electronic	Hard-copy	Evidence
P10	P10_Front Entry Sign 1000005072	JBS&G	X		Photo of the Front Entry Sign including the requirement for a speed limit of 15 km/h
P11	P11_Water Cart 1000005561	JBS&G	X		Photo of the water cart applying water to disturbed soil.
P12	P12_Retained Vegetation Fencing IMG_6957	JBS&G	X		Photo of retained vegetation fencing.
P13	P13_ROS Boundary Flagging 1000005539	JBS&G	X		Photo of ROS Boundary Flagging adjacent to northern section of retained CBC habitat in eastern ROS.
P14	P14_ROS Boundary Flagging 1000005541	JBS&G	X		Photo of ROS Boundary Flagging adjacent to northern section of retained CBC habitat in eastern ROS.
P15	P15_Washdown Bay IMG_8939	JBS&G	X		Photo of Washdown Bay.
R01	R01_JBSG 2025 ACR	JBS&G	X		This Annual Compliance Report
R02	R02_65751 Jindee ACR 2024 (Rev 0)	JBS&G	X		Estates Development Company Jindee Innovation Project, Jindalee, WA (EPBC 2012/6631) 2024 Annual Compliance Report JBS&G [65751 Rev 0] 6 May 2024
R03	R03_JBSG_Jindee_CRMP_Rev 7	Strategen-JBS&G	X		Westminster Estates Pty Ltd Jindee Innovation Project Clearing and Revegetation Management Plan [57481 Rev 7] 9 December 2020
R04	R04_JBSG_Jindee_CMP_Rev 8	Strategen-JBS&G	X		Westminster Estates Pty Ltd Jindee Innovation Project Conservation Management Plan [57481 Rev 8] 9 December 2020
R05	R05_61568 R01 Jindee Release 5 subdivision BMP (Rev 0)	Strategen-JBS&G	X		Estates Development Company Bushfire Management Plan (Subdivision Application) Release 5 Jindee Estate, Jindalee [61568 Rev 0] 22 September 2021
R06	R06_63519 M01 Jindee Release 5 subdivision BMP addendum (Rev 0)	Strategen-JBS&G	X		Estates Development Company Bushfire Management Plan Addendum: Jindee Estate Release 5 subdivision, Jindalee [63519 M01 Rev 0] 2 September 2022
R07	R07_65186 M01 Jindee Release 6 subdivision BMP addendum (Rev 0)	JBS&G	X		Estates Development Company Bushfire Management Plan Addendum: Jindee Estate Release

Code	Reference	Author	Electronic	Hard-copy	Evidence
					6 subdivision, Jindalee [65186 M01 Rev 0] 28 July 2023
R08	R08_65414 M01 Jindee Release 12 subdivision BMP addendum (Rev 1)	JBS&G	X		Estates Development Company Bushfire Management Plan Addendum: Jindee Estate Release 12 subdivision, Jindalee [65414 M01 Rev 1] 5 April 2024
R09	R09_68103 M01 Jindee subdivision renewal BMP addendum (Rev 0)_reduced	JBS&G	X		Estates Development Company Bushfire Management Plan Addendum: Jindee Subdivision Renewal [68103 Rev 0] 06 December 2024
R10	R10_66609 R01 Jindee Release 5 BMP compliance (Rev 0)	JBS&G	X		Estates Development Company Jindee Release 5 Bushfire Management Plan Compliance and Condition Clearance Report [66609 Rev 0] 5 April 2024

© JBS&G

This document is and shall remain the property of JBS&G. The document may only be used for the purposes for which it was commissioned and in accordance with the Terms of Engagement for the commission. Unauthorised use of this document in any form whatsoever is prohibited

Document Distribution

Rev No.	Copies	Recipient	Date
A	1: Electronic	Jimmy Tharpe, EDC	06/05/2025

Document Status

Rev No.	Author	Reviewer Name	Approved for Issue Name	Signature	Date
0	A. Wills	A. Winzer	A. Winzer		06/05/2025



Adelaide

Kaurna Country | 100 Hutt St,
Adelaide, SA 5000
T: 08 8431 7113

Brisbane

Turrbal/Yuggera Country | Level 37, 123
Eagle Street, Brisbane, QLD 4000
T: 07 3211 5350

Bunbury

Wardandi Noongar Country | 177
Spencer Street Bunbury, WA 6230
T: 08 9792 4797

Canberra

Ngunnawal Country | Level 1, The Realm
18 National Circuit Barton, ACT 2600
T: 02 6198 3278

Darwin

Larrakia Country | Suite G1, Level 1
48-50 Smith Street, Darwin NT 0800
T: 08 8943 0600

Hobart

Muwununa/Nuenon Country | Level 6,
111 Macquarie Street Hobart, TAS 7000
T: 03 6108 9054

Melbourne

Kulin Country | Level 5, 10 Queen
Street, Melbourne, VIC 3000
T: 03 9642 0599

Newcastle

Awabakal/Worimi Country | 61 / 63
Parry Street Newcastle West, NSW 2302
T: 02 8245 0300

Perth

Whadjuk Nyoongar Country | Allendale Square,
Level 9, 77 St Georges Terrace, WA 6000
T: 08 9380 3100

Sydney

Gadigal Country | Level 1, 50
Margaret Street, Sydney, NSW 2000
T: 02 8245 0300

Wollongong

Dharawal Country | Suite 1A, 280 - 286
Keira Street, Wollongong, NSW 2500
T: 02 4225 2647