



THOMPSONS BAY

House price from \$427,950*



Artist impression*

3 | 2 | 2

HOUSE AREA
221m²

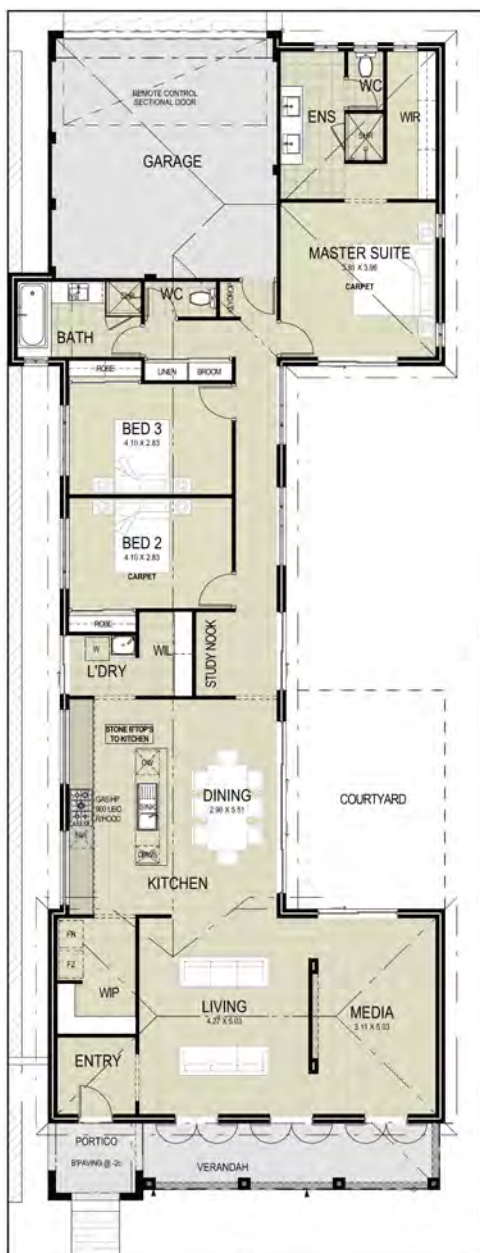
FRONTAGE
12m

LOT TYPE
T4

New Choice
HOMES



Artist impression*



THOMPSONS BAY

FEATURES

- Inspired by our iconic Rottnest Island this modern version of a coastal classic is sure to catch your eye.
- Designed with your lifestyle in mind, this 3 bedroom, 2 bathroom home has the perfect balance of indoor and outdoor living spaces.
- This home has everything including large, open plan kitchen with walk in pantry. Spacious living and dining connects with the verandah and courtyard plus separate media room.
- Package includes floor coverings and window treatments.
- Backed by Spadaccini Homes.

House price from \$427,950*

Want more information?

Contact: Nicola from Jindee on 0437 602 109

Visit: our Sales Office – corner of Marmion & Oceania Ave, Jindalee (JINDEE)



jindee.com.au

1300JINDEE

JINDEE

Illustrations and perspectives of homes are indicative only and may be subject to change to achieve planning approval. Buyers are required to lodge a full application for formal approval with the Jindee Town Architects Office. Produced February 2024. *Prices are correct at time of printing and are subject to change (including increase) without notice. Above pricing includes the base home price only. Site works are not included and can be provided separately after a formal survey of the lot by the purchasers' chosen builder – all costs related to the survey of the lot are the responsibility of the purchasers. This flyer contains information only and does not constitute an offer capable of acceptance by a prospective purchaser.