



THE PASADENA

House price from \$301,700*



Artist impression*



3



2



2

HOUSE AREA
240.17m²

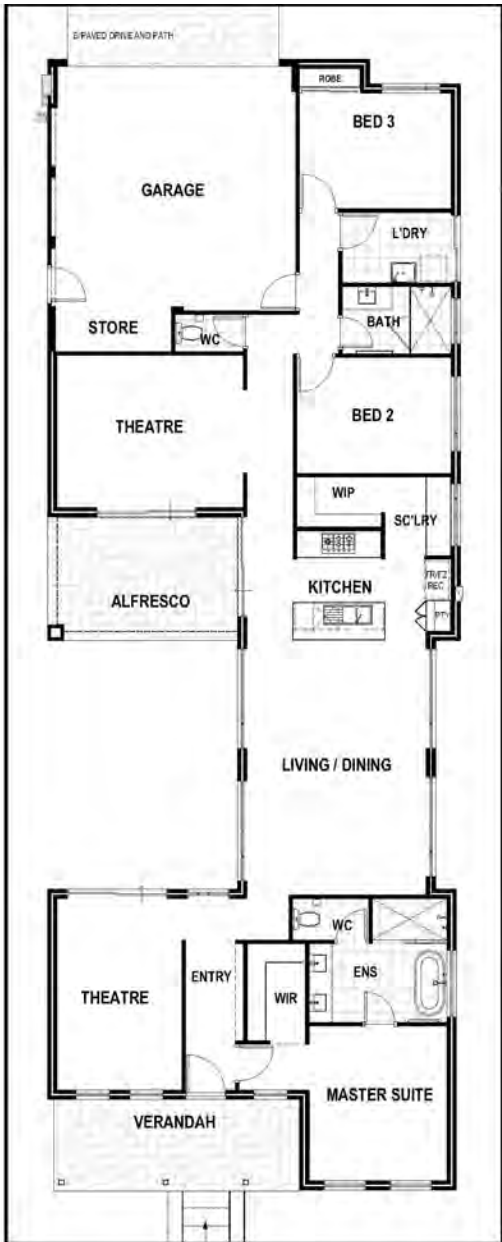
FRONTAGE
12m

LOT TYPE
T4





Artist Impression*



SUMMIT
HOMES

THE PASADENA FEATURES

- Live everyday like a holiday in this beautiful 3 bedroom, 2 bathroom plus theatre coastal home.
- Offering stunning street appeal, the welcoming verandah is complete with feature balustrade and window treatments.
- Unwind in the luxury master suite with 33c ceilings, spacious walk in robe and double en-suite with a free-standing bath.
- The gourmet kitchen, with island bench and scullery, is perfect for social gatherings as the connecting living and dining opens directly onto the central alfresco.
- The generous minor bedrooms with built in robes, separate bathroom and laundry are tucked away from family activity.

House price from \$301,700*

Want more information?

Contact: Nicola from Jindee on 0437 602 109

Visit: our Sales Office - corner of Marmion & Oceania Ave, Jindalee (JINDEE)



jindee.com.au

1300JINDEE

JINDEE

Illustrations and perspectives of homes are indicative only and may be subject to change to achieve planning approval. Buyers are required to lodge a full application for formal approval with the Jindee Town Architects Office. Produced November 2021 *Prices are correct at time of printing and are subject to change (including increase) without notice. Above pricing includes the base home price only. Site works are not included and can be provided separately after a formal survey of the lot by the purchasers' chosen builder - all costs related to the survey of the lot are the responsibility of the purchasers. This flyer contains information only and does not constitute an offer capable of acceptance by a prospective purchaser.